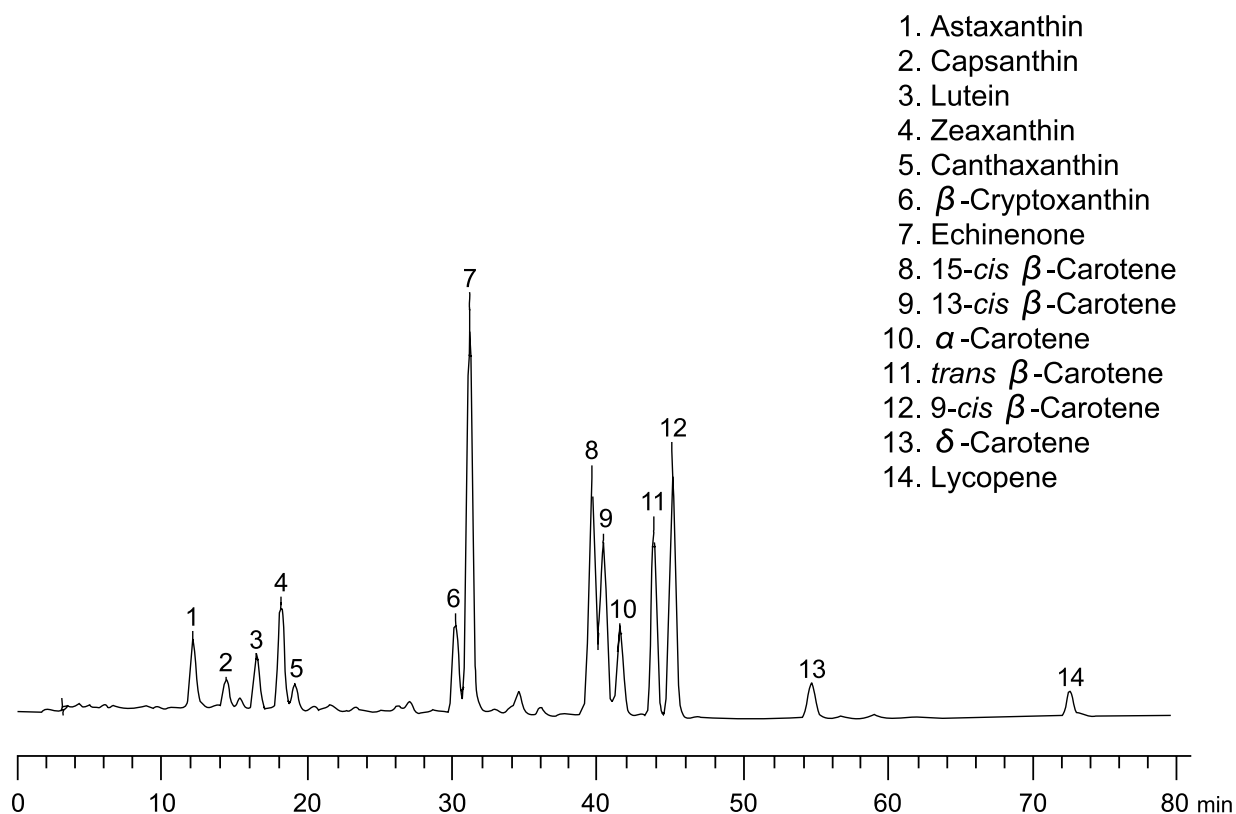


カロテンおよびキサントフィル
Carotene and xanthophyll

A110401A



Column : YMC Carotenoid (5 μ m)
250 X 4.6 mmI.D.
Eluent : A) methanol/MTBE*/water (81/15/4)
B) methanol/MTBE*/water (6/90/4)
0-100%B (0-90 min)
Flow rate : 1.0 mL/min
Temperature : ambient
Detection : UV at 450 nm

*MTBE: Methyl *tert*-butyl ether

**Gradient elution was performed by ternary gradient elution. Mobile phase B) is not miscible in this proportion. For binary gradient elution, MeOH/MTBE/water (7/90/3) is suitable as mobile phase B).