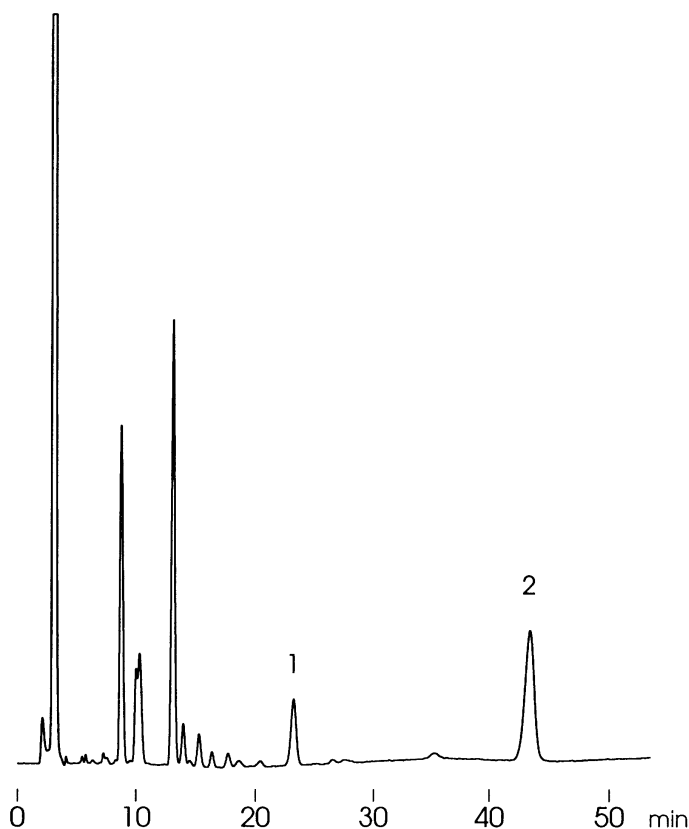


市販清涼飲料水のオリゴ糖  
Oligosaccharides of soft drink

A970630C

1. Gal  $\alpha$  1 $\rightarrow$ 6Glc  $\alpha$  1 $\rightarrow$ 2  $\beta$  Fruf (Raffinose)
2. [Gal  $\alpha$  1 $\rightarrow$ 6]<sub>2</sub>Glc  $\alpha$  1 $\rightarrow$ 2  $\beta$  Fruf (Stachyose)



Column : YMC-Pack Polyamine II  
250 × 4.6 mm I.D.

Eluent : acetonitrile/water (70/30)

Flow rate : 1.0 mL/min

Temperature : ambient (27 °C)

Detection : RI, 32 × 10<sup>-6</sup> RIU/FS

Injection : 10 μL

Sample : 10 times dilution with water