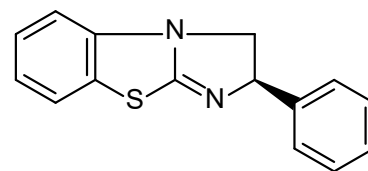
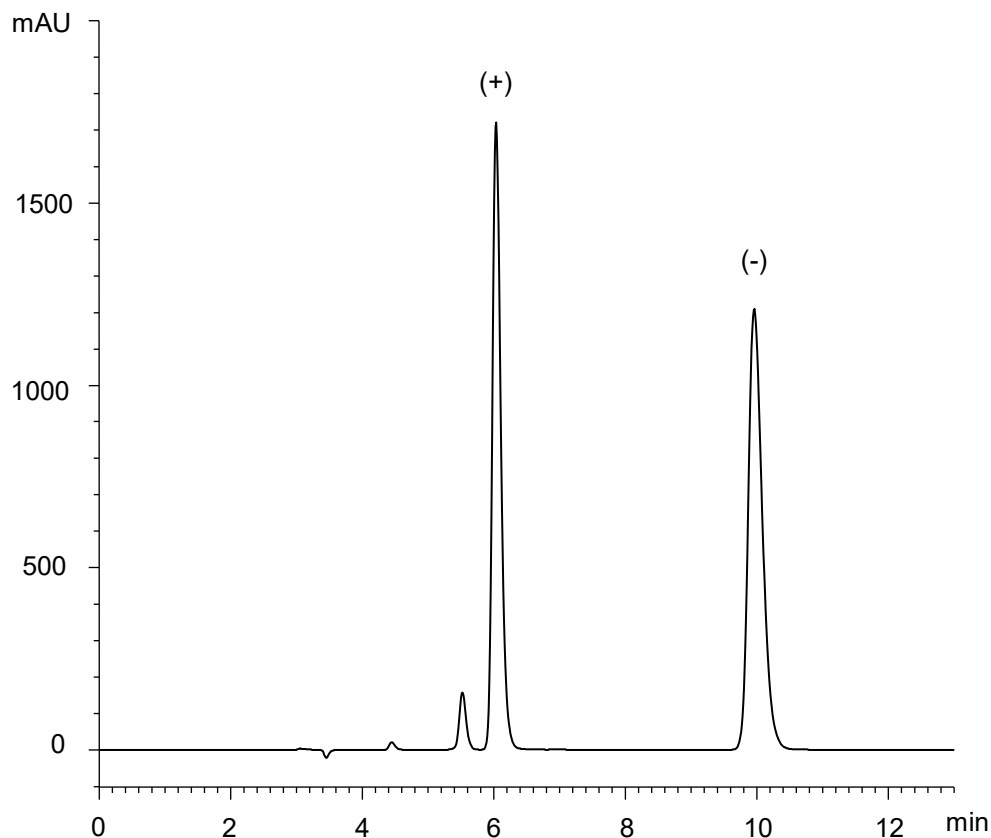
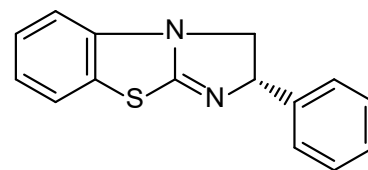


ベンゾテトラミゾール  
Benzotetramisole

E170825A



(+)



(-)

$\alpha$	2.2
$R_s$	12.2

Column : CHIRAL ART Cellulose-C (5  $\mu$ m)  
250 X 4.6 mm I.D.  
Eluent : *n*-hexane/2-propanol (50/50)  
Flow rate : 1.0 mL/min  
Temperature : 25°C  
Detection : UV at 270 nm  
Injection : 10  $\mu$ L (0.5 mg/mL)