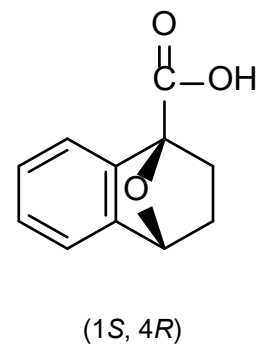
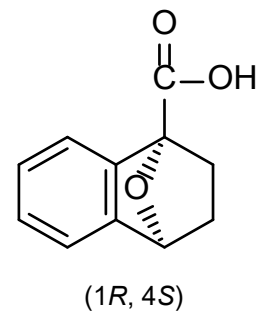
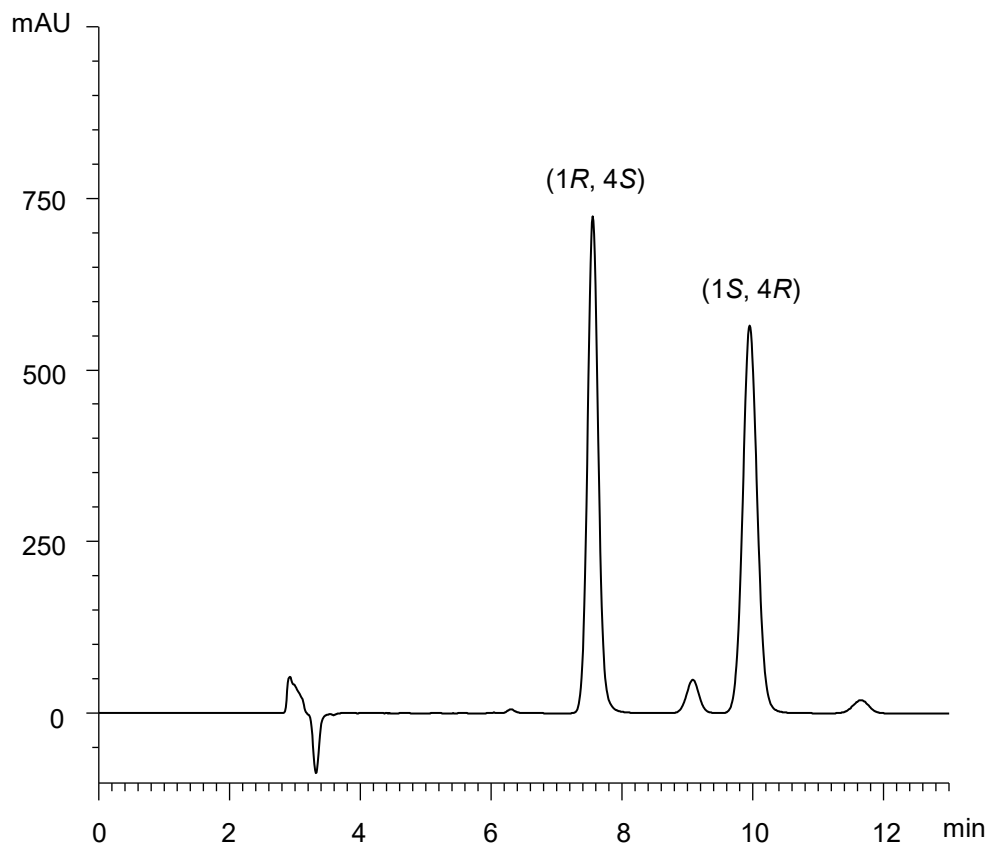


1,2,3,4-テトラヒドロ-1,4-エポキシナフタレン-1-カルボン酸

1,2,3,4-Tetrahydro-1,4-epoxynaphthalene-1-carboxylic Acid

E170905B



α	1.5
R_s	6.5

Column : CHIRAL ART Amylose-C (5 μ m)
250 X 4.6 mm I.D.

Eluent : *n*-hexane/ethanol/trifluoroacetic acid (85/15/0.1)

Flow rate : 1.0 mL/min

Temperature : 25°C

Detection : UV at 210 nm

Injection : 10 μ L (0.5 mg/mL)