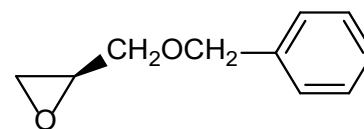
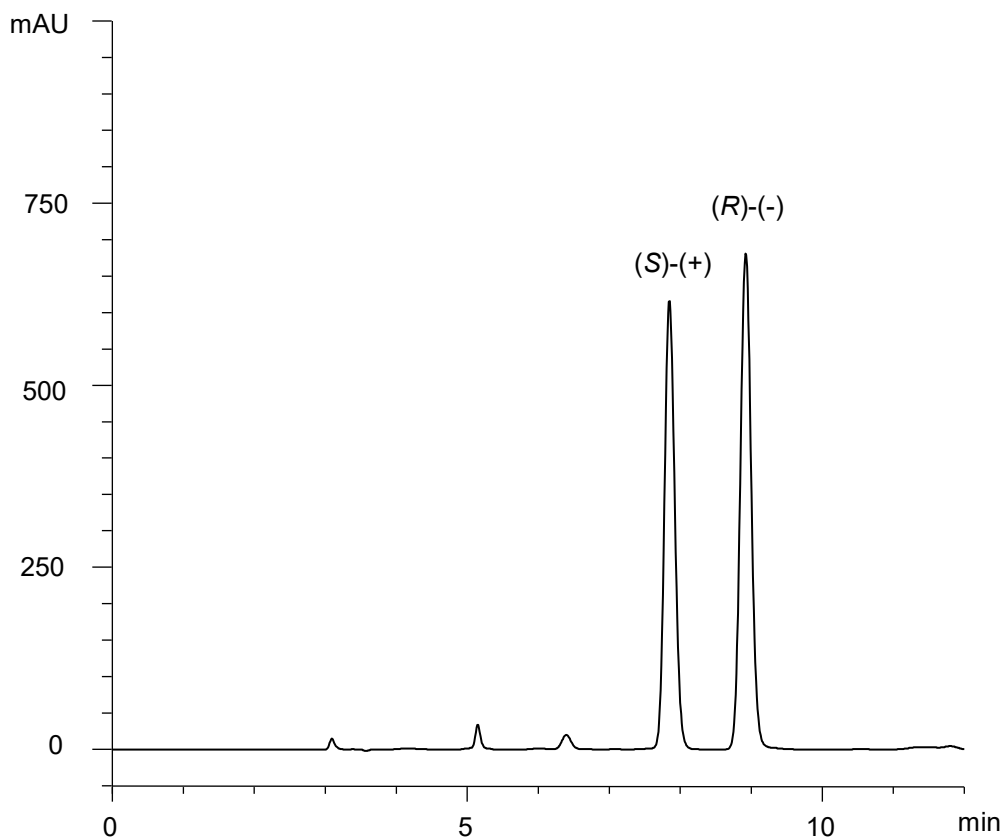
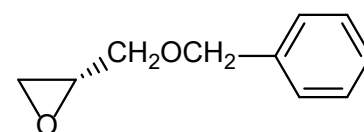


ベンジルグリシジルエーテル
Benzyl Glycidyl Ether

E180418D



(S)-(+)



(R)-(-)

α	1.2
R_s	3.7

Column : CHIRAL ART Cellulose-C (5 μ m)
250 X 4.6 mm I.D.
Eluent : *n*-hexane/2-propanol (95/5)
Flow rate : 1.0 mL/min
Temperature : 25°C
Detection : UV at 215 nm
Injection : 10 μ L (0.5 mg/mL)