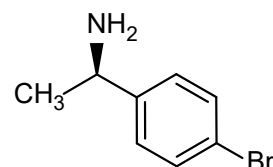
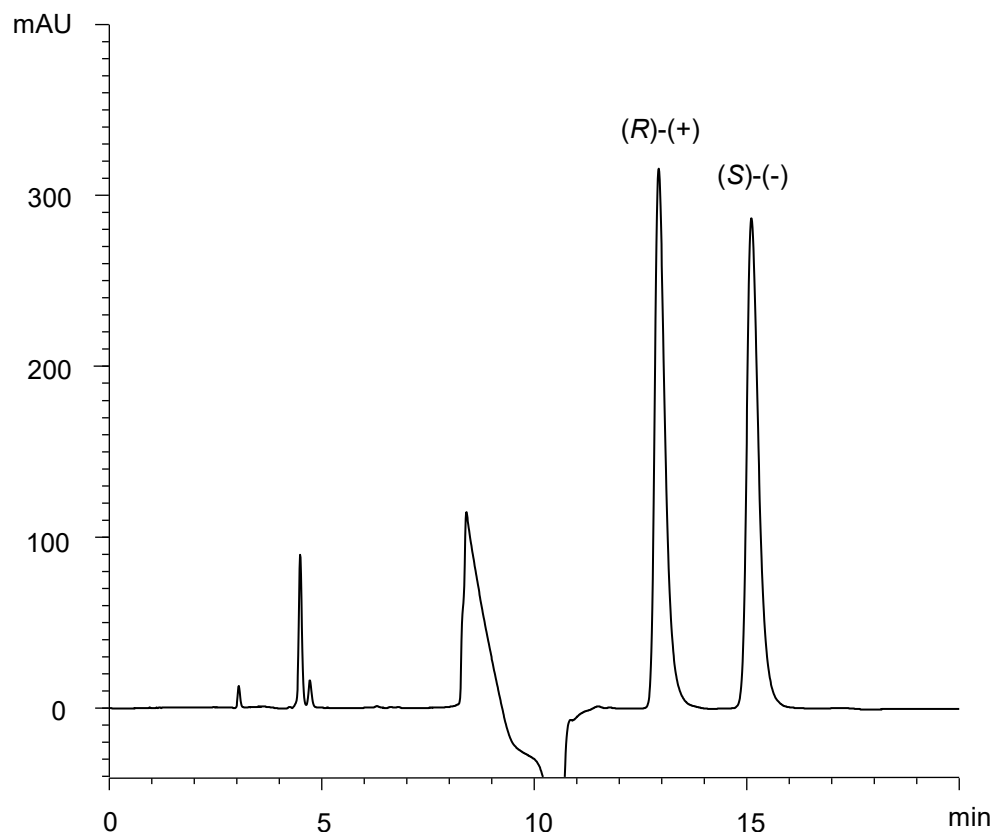


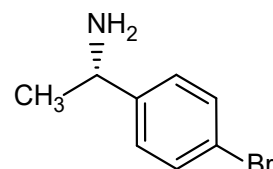
1-(4-ブロモフェニル)エチルアミン

1-(4-Bromophenyl)ethylamine

E180524C



(R)-(+)



(S)-(-)

α	1.2
R_s	4.5

Column : CHIRAL ART Cellulose-SB (5 μ m)
250 X 4.6 mm I.D.

Eluent : *n*-hexane/methyl *tert*-butyl ether/*n*-butylamine (70/30/0.1)

Flow rate : 1.0 mL/min

Temperature : 25°C

Detection : UV at 230 nm

Injection : 10 μ L (0.5 mg/mL)

Sample : Supplied by Tokyo Chemical Industry Co., Ltd.