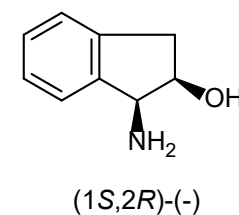
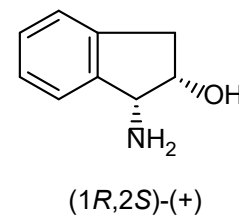
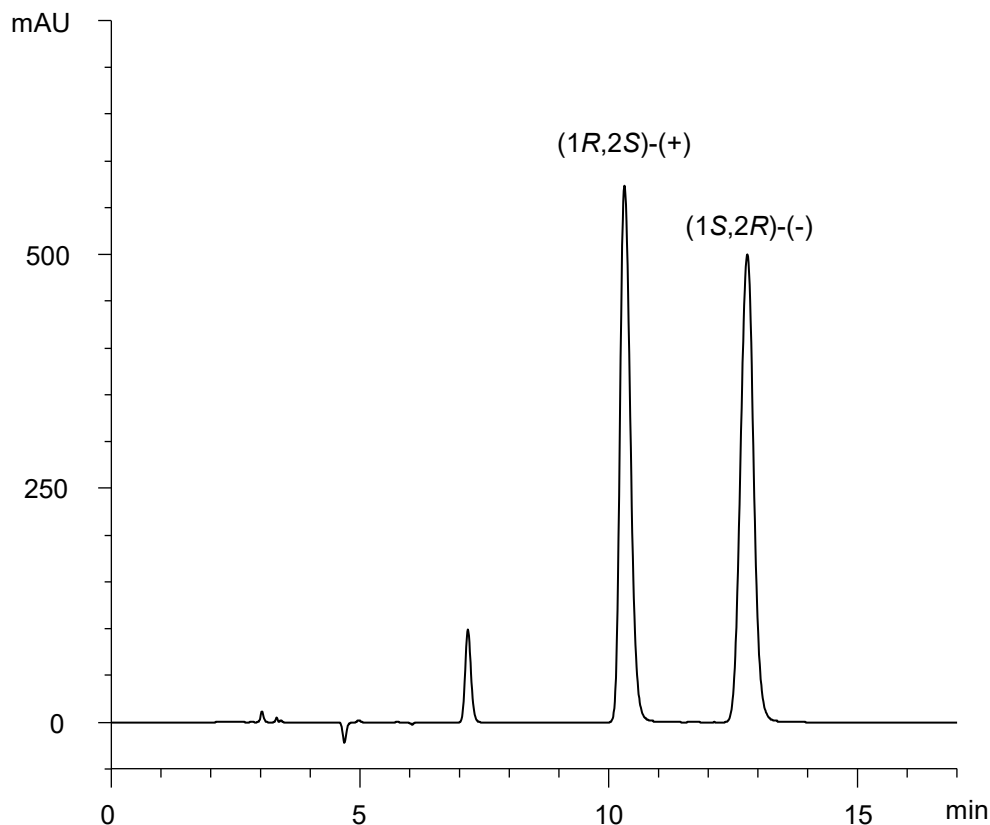


*cis*-1-アミノ-2-インダノール  
*cis*-1-Amino-2-indanol

E181112A



$\alpha$	1.3
R <sub>s</sub>	5.6

Column : CHIRAL ART Cellulose-C (5  $\mu$ m)  
250 X 4.6 mmI.D.  
Eluent : *n*-hexane/ethanol/trifluoroacetic acid/*n*-butylamine (95/5/0.1/0.1)  
Flow rate : 1.0 mL/min  
Temperature : 25°C  
Detection : UV at 215 nm  
Injection : 10  $\mu$ L (0.5 mg/mL)