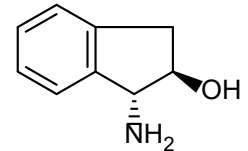
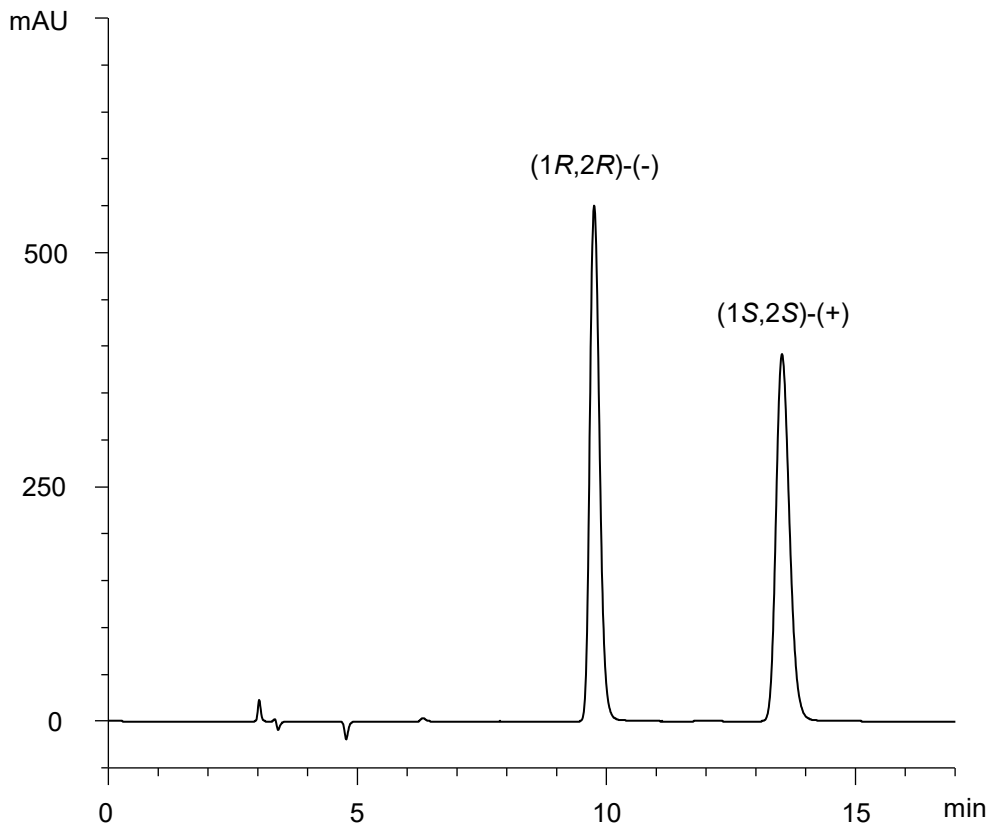


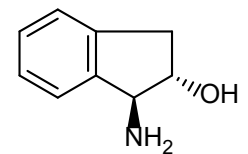
*trans*-1-アミノ-2-インダノール

*trans*-1-Amino-2-indanol

E181112D



(1R,2R)-(-)



(1S,2S)-(+)

$\alpha$	1.5
R <sub>s</sub>	8.7

Column : CHIRAL ART Cellulose-C (5  $\mu$ m)  
250 X 4.6 mm I.D.

Eluent : *n*-hexane/ethanol/trifluoroacetic acid/*n*-butylamine (95/5/0.1/0.1)

Flow rate : 1.0 mL/min

Temperature : 25°C

Detection : UV at 215 nm

Injection : 20  $\mu$ L (0.25 mg/mL)

Sample : Supplied by Tokyo Chemical Industry Co., Ltd.