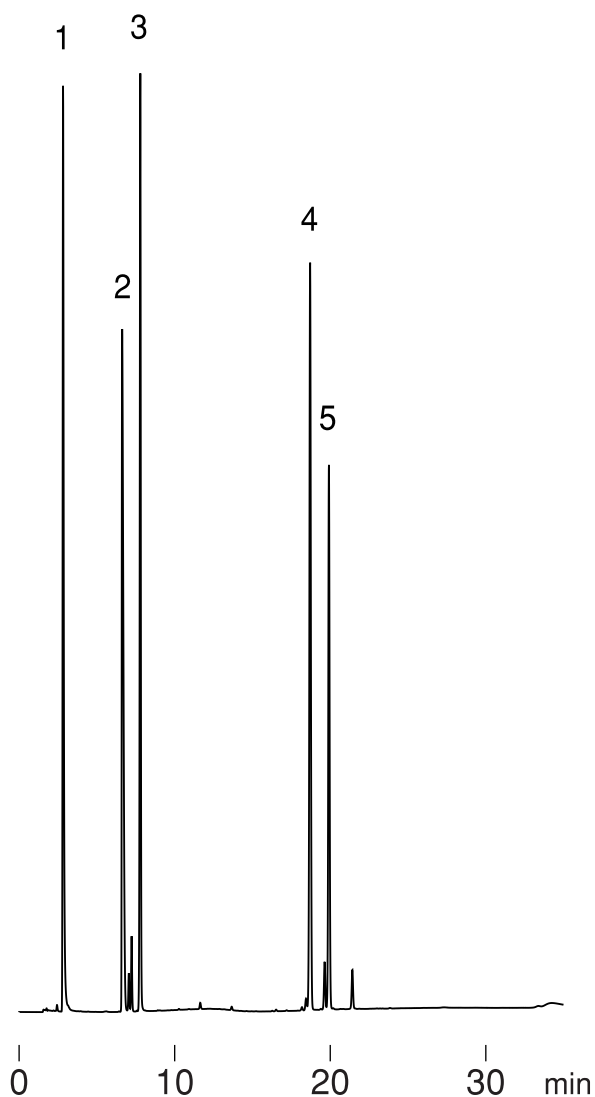


水溶性ビタミン
Water-soluble vitamins

F001011A



1. Thiamine HCl (Vitamin B₁)
2. Pyridoxine HCl (Vitamin B₆)
3. Nicotinamide
4. Caffeine
5. Flavin mononucleotide sodium salt (Vitamin B₂)

Column : Hydrosphere C18 (5 μ m, 12nm)
150 \times 4.6 mm I.D.

Eluent : A)50mM KH₂PO₄-H₃PO₄(pH3.5)
B)50mM KH₂PO₄-H₃PO₄(pH3.5)/acetonitrile (80/20)
0-90%B(0-20min), 90%B(20-30min)

Flow rate : 1.0 mL/min

Temperature : 30 $^{\circ}$ C

Detection : UV at 254 nm, 0.32AUFS

Injection : 15 μ L (0.04~0.60 mg/mL)