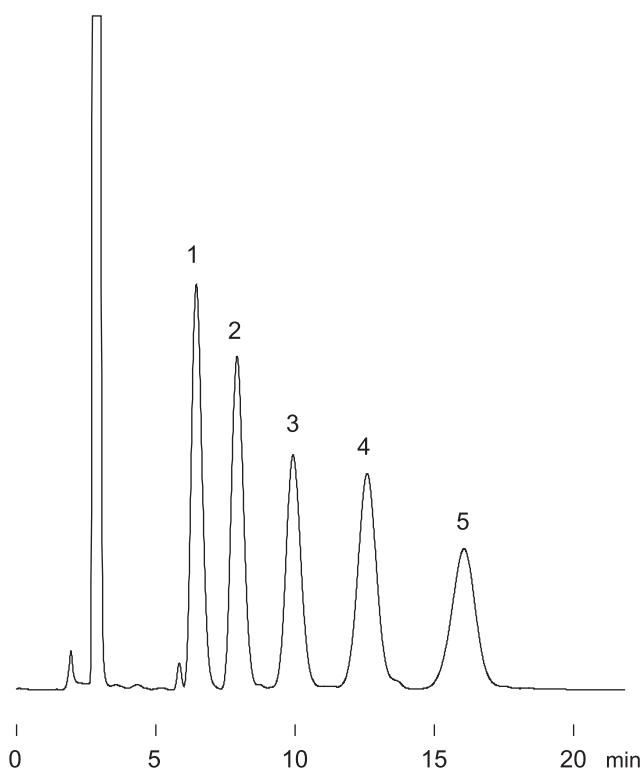


キチンオリゴ糖  
N-Acetyl-chitooligosaccharides

F030601A

1. N-Acetylglucosamine
2. N-Acetyl-chitobiose
3. N-Acetyl-chitotriose
4. N-Acetyl-chitotetraose
5. N-Acetyl-chitopentaose



Column : YMC-Pack Polyamine II  
250 × 4.6 mm I.D.  
Eluent : acetonitrile/water (65/35)  
Flow rate : 1.0 mL/min  
Temperature : 25 °C  
Detection : RI, 16 × 10<sup>-6</sup> RIU/FS  
Injection : 15 μL (0.2 mg/mL)