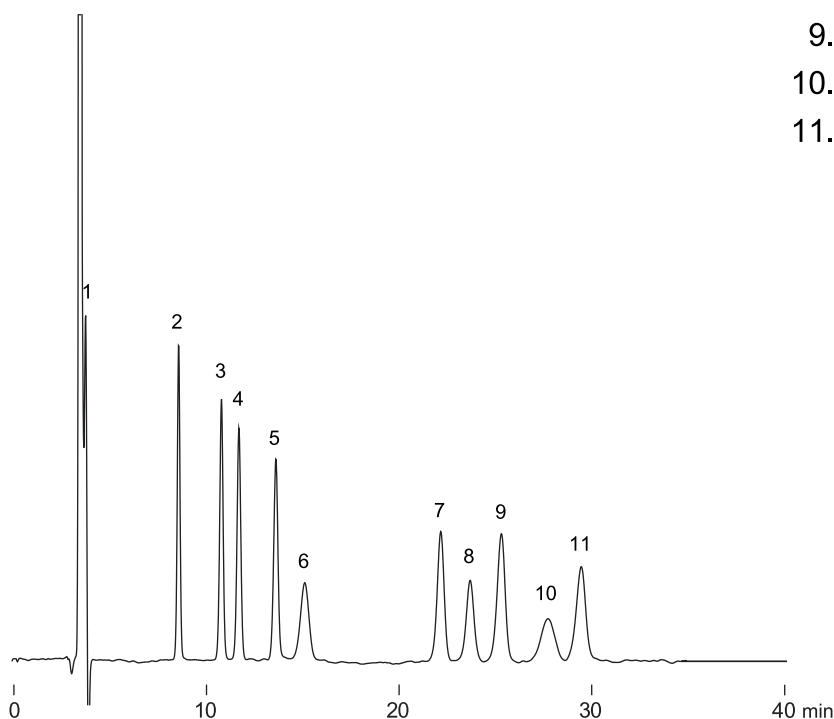


糖類および甘味料の一斉分析
Sugars and sweeteners

F030613C

1. Sucralose
2. Erythritol
3. Xylitol
4. Fructose
5. Sorbitol
6. Glucose
7. Sucrose
8. Palatinose
9. Maltitol
10. Maltose
11. Lactitol



Column : YMC-Pack Polyamine II
250 × 4.6 mm I.D.
Eluent : acetonitrile/water (75/25)
Flow rate : 1.0 mL/min
Temperature : 25 °C
Detection : RI, 32 × 10⁻⁶ RIU/FS
Injection : 5 μL (5.0 mg/mL)