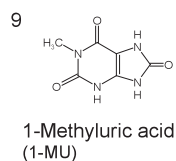
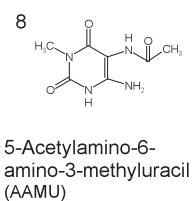
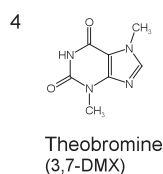
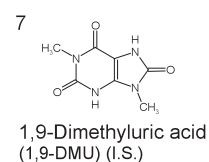
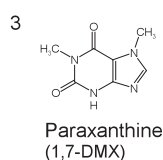
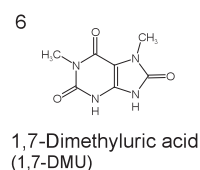
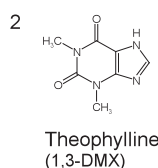
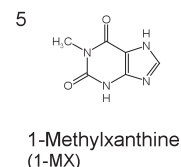
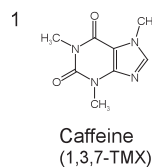
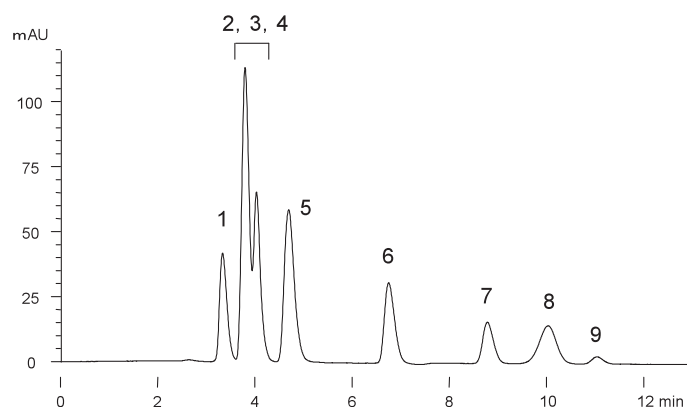


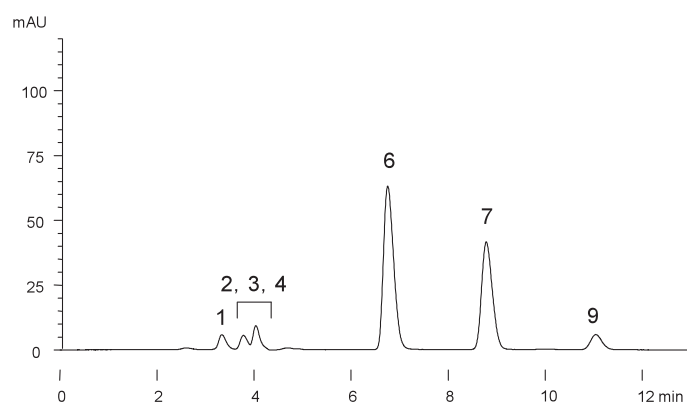
カフェイン代謝物
Caffeine metabolites

F041213A

A) UV at 255nm



B) UV at 295nm



Courtesy of Takashi FURUTA, Ph.D., Tokyo University of Pharmacy and Life science

Column : YMC-Pack Polyamine II
250 × 4.6 mm I.D.
Eluent : acetonitrile/0.75% formic acid (4/1)
Flow rate : 1.0 mL/min
Temperature : ambient
Detection : A) UV at 255 nm, B) UV at 295nm
Injection : 10 μ L