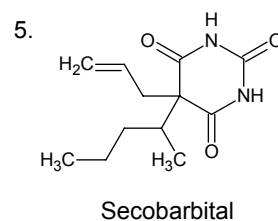
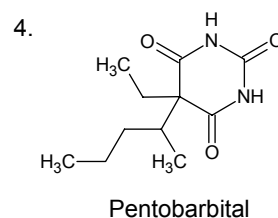
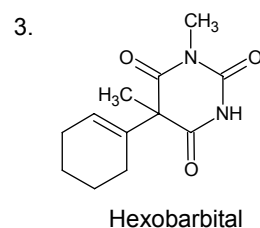
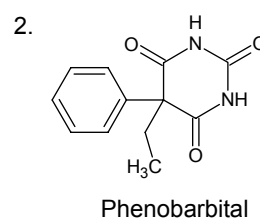
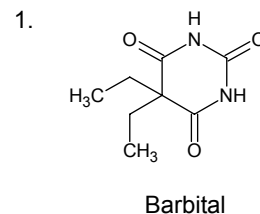
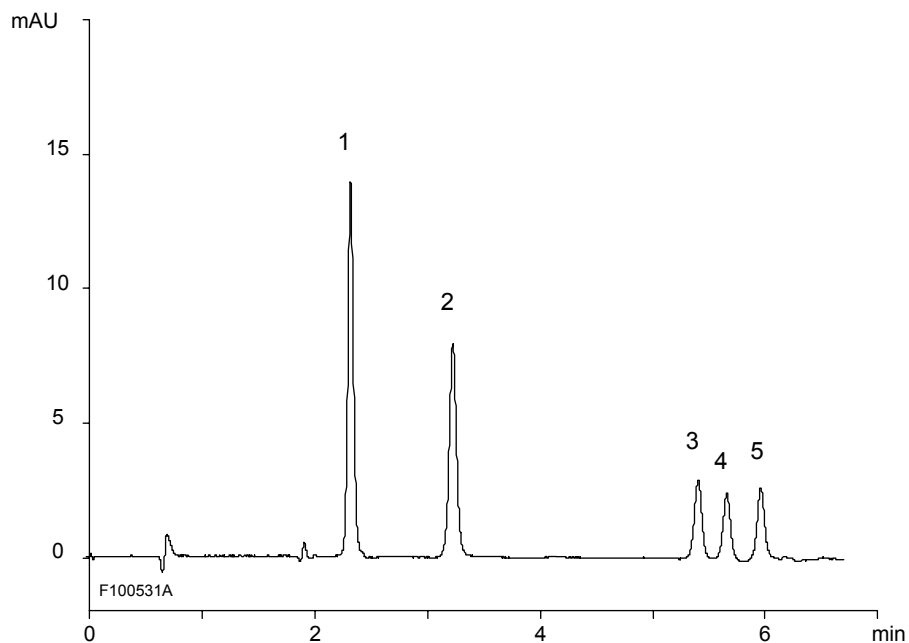
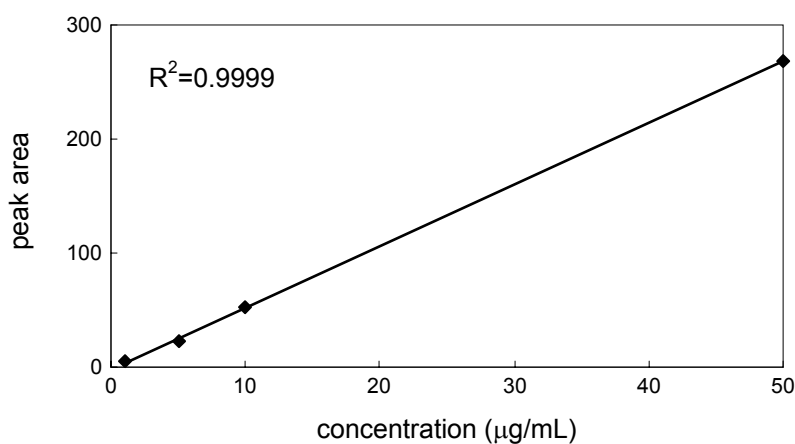


バルビツール酸系薬物
Barbiturates

F100621A



Calibration curve of barbital



Column : YMC-Triart C18 (5 µm, 12 nm)
50 X 2.0 mmI.D.

Eluent : A) 20 mM HCOONH₄-NH₃ (pH 9.5)
B) methanol
0-90%B (0-7 min)

Flow rate : 0.2 mL/min

Temperature : 25°C

Detection : UV at 240 nm

Injection : 1 µL (10 µg/mL)