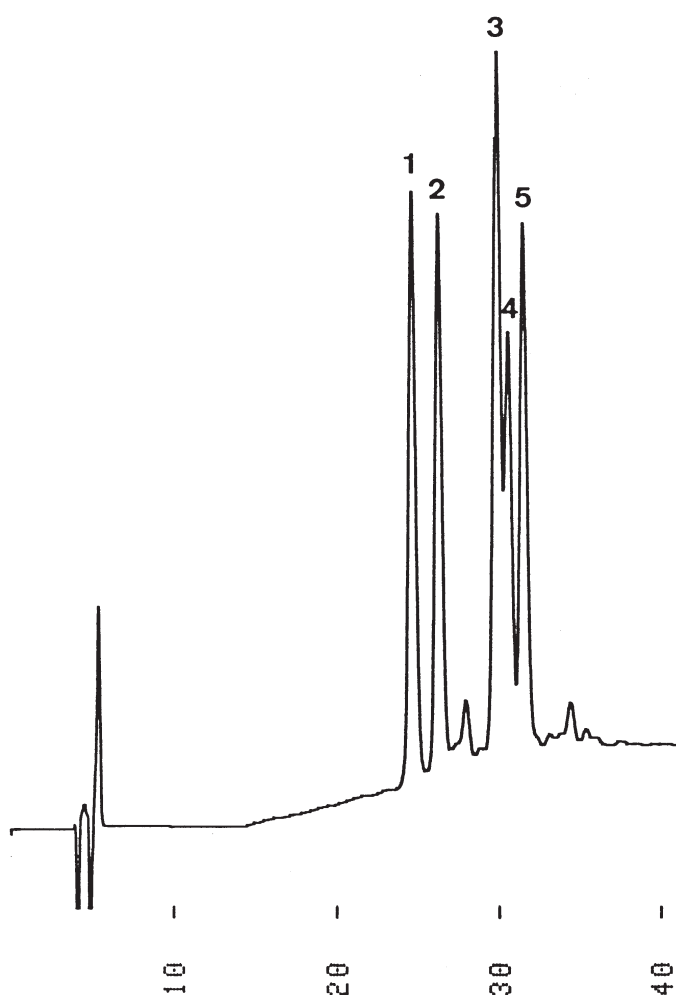


インスリン  
Insulins

G910522C



1. Insulin (Bovine)
2. Insulin (Sheep)
3. Insulin (Human)
4. Insulin (Equine)
5. Insulin (Porcine)

Column : YMC-Pack ODS-AM (5  $\mu$ m, 12nm)  
250  $\times$  4.6 mm I.D.

Eluent : A) acetonitrile/water/TFA (30/70/0.1)  
B) acetonitrile/water/TFA (32/68/0.1)  
0%B (0-3min), 0-100%B (3-25min, linear), 100%B (25-40min)

Flow rate : 0.6 mL/min

Temperature : 30  $^{\circ}$ C

Detection : UV at 220 nm, 0.16 AUFS

Injection : 15  $\mu$ L (0.2 mg/mL)