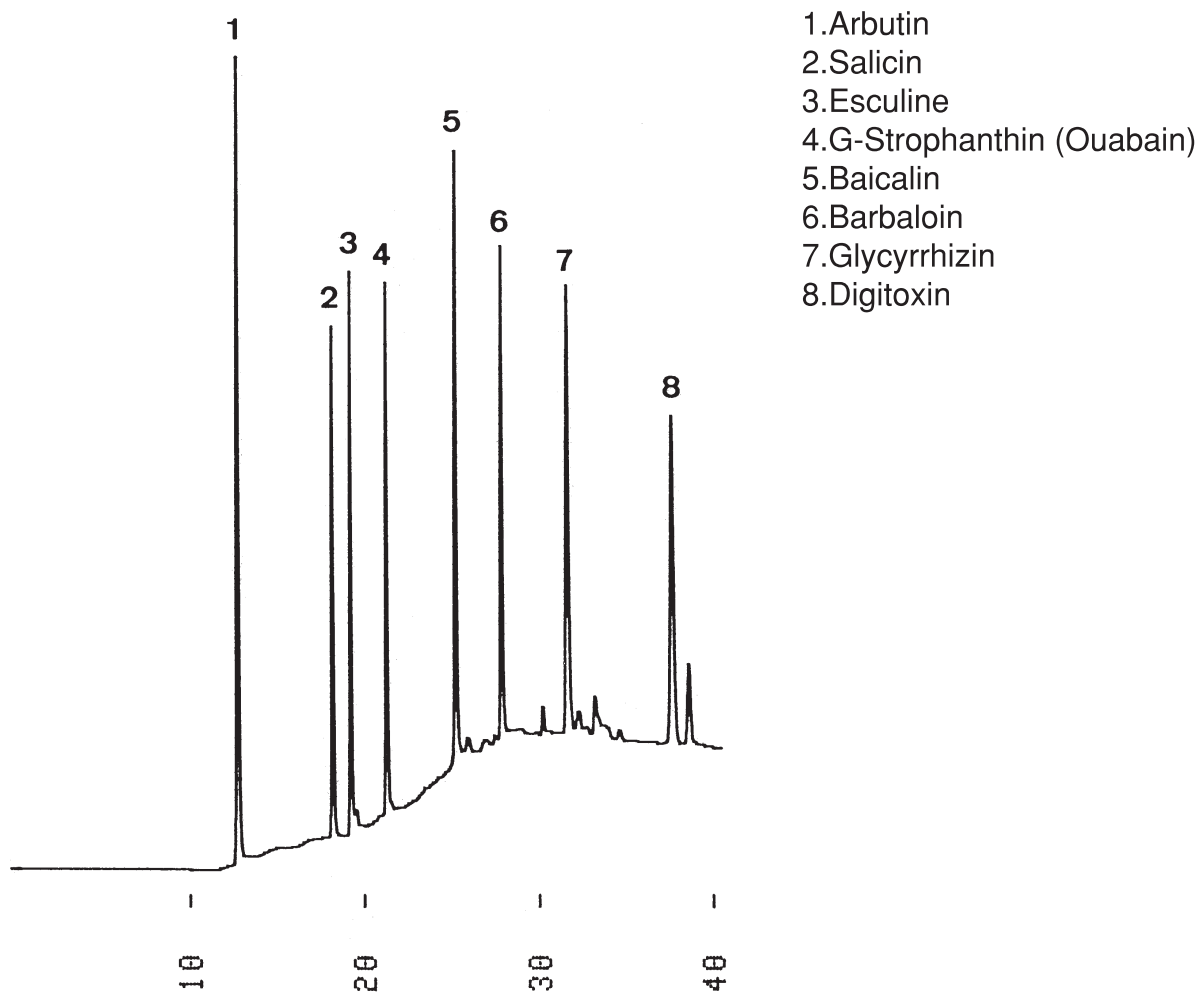


生薬成分 (配糖体)  
Crude drugs(Glycosides)

G910607E



Column : YMC-Pack ODS-AQ (5  $\mu$ m, 12nm)  
250  $\times$  4.6 mm I.D.  
Eluent : A)methanol/20mM NH<sub>4</sub>H<sub>2</sub>PO<sub>4</sub> (5/95)  
B)methanol/20mM NH<sub>4</sub>H<sub>2</sub>PO<sub>4</sub> (80/20)  
0-100%B (0-20min, linear), 100%B (20-40min)  
Flow rate : 0.6 mL/min  
Temperature : 30  $^{\circ}$ C  
Detection : UV at 250 nm, 0.08 AUFS  
Injection : 18  $\mu$ L (0.01~0.49 mg/mL)