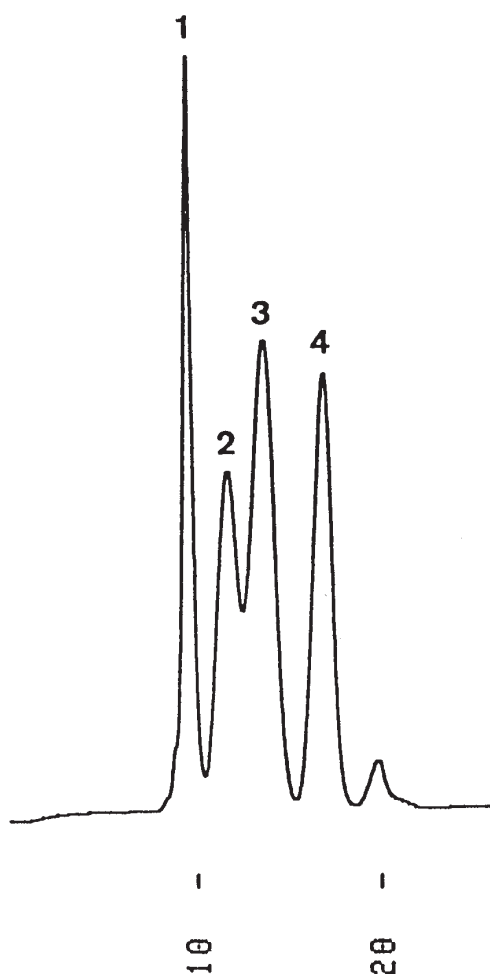


プルラン
Pullulans

G911216C



1. Pullulan P-800 (MW 853,000)
2. Pullulan P-50 (MW 48,000)
3. Pullulan P-20 (MW 23,700)
4. Pullulan P-5 (MW 5,800)

Column : YMC-Pack Diol-200
500 × 8.0 mm I.D.
Eluent : water
Flow rate : 1.0 mL/min
Temperature : ambient (24 °C)
Detection : RI, 16 × 10⁻⁶ RIU/FS
Injection : 180 μL (0.25 mg/mL)
Sample : Shodex STANDARD P-82
manufactured by SHOWA DENKO K.K.