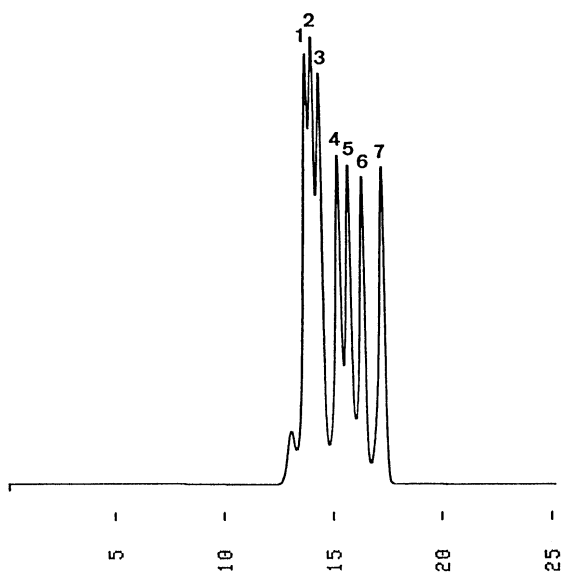


マルトオリゴ糖(G1~G15)
Maltooligosaccharides(G1~G15)

G911216E

1. Maltopentadecaose (G15)
2. Maltotridecaose (G13)
3. Maltoundecaose (G11)
4. Maltoheptaose (G7)
5. Maltopentaose (G5)
6. Maltotriose (G3)
7. Glucose (G1)



Column : YMC-Pack Diol-60
500 × 8.0 mm I.D.
Eluent : water
Flow rate : 1.0 mL/min
Temperature : ambient (24 °C)
Detection : RI, 64 × 10⁻⁶ RIU/FS
Injection : 60 μL (0.60~0.75 mg/mL)