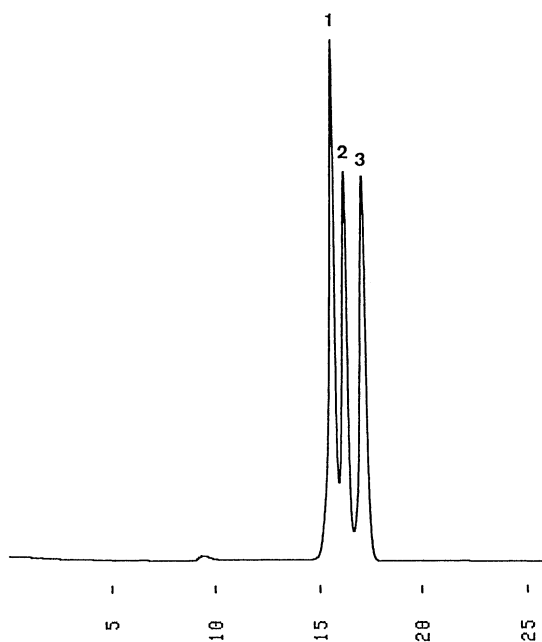


サイクロデキストリン
Cyclodextrins

G911216I

1. γ -Cyclodextrin
2. β -Cyclodextrin
3. α -Cyclodextrin



Column : YMC-Pack Diol-60
500 × 8.0 mm I.D.
Eluent : water
Flow rate : 1.0 mL/min
Temperature : ambient (24 °C)
Detection : RI, 32×10^{-6} RIU/FS
Injection : 30 μ L (1.67 mg/mL)