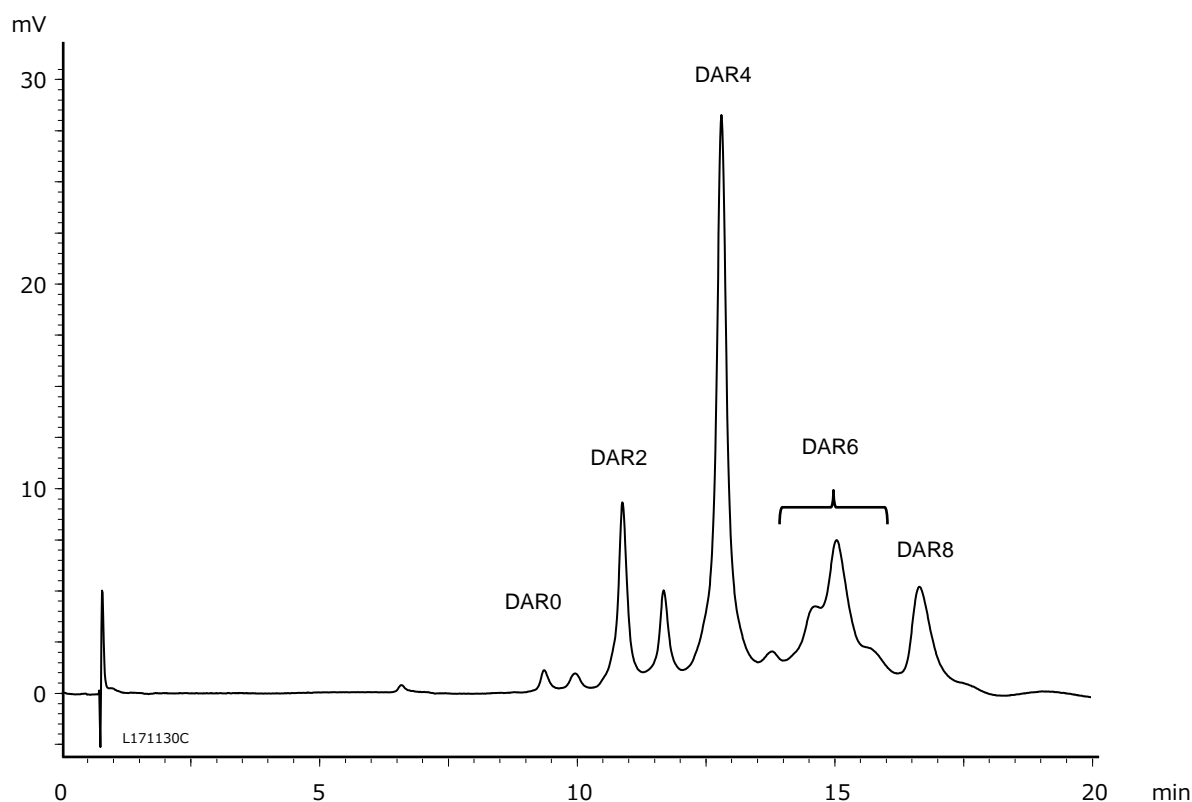


抗体薬物複合体 (ADC) の薬物抗体比 (DAR) 分析  
Drug-to-Antibody Ratio (DAR) analysis of ADCs\*

L171130C

\*ADCs : Antibody-Drug Conjugates



Column	: BioPro HIC BF (4 μm), 100 X 4.6 mm I.D.
Eluent	: A) 50 mM NaH <sub>2</sub> PO <sub>4</sub> -Na <sub>2</sub> HPO <sub>4</sub> (pH 7.0) containing 1.5 M (NH <sub>4</sub> ) <sub>2</sub> SO <sub>4</sub> /2-propanol (95/5) B) 50 mM NaH <sub>2</sub> PO <sub>4</sub> -Na <sub>2</sub> HPO <sub>4</sub> (pH 7.0)/2-propanol (80/20) 0%B (0-1 min), 0-100%B (1-15 min), 100%B (15-20 min)
Flow rate	: 1.0 mL/min
Temperature	: 25°C
Detection	: UV at 280 nm
Injection volume	: 5 μL
Sample	: Cysteine-conjugated ADC mimic (5 mg/mL)