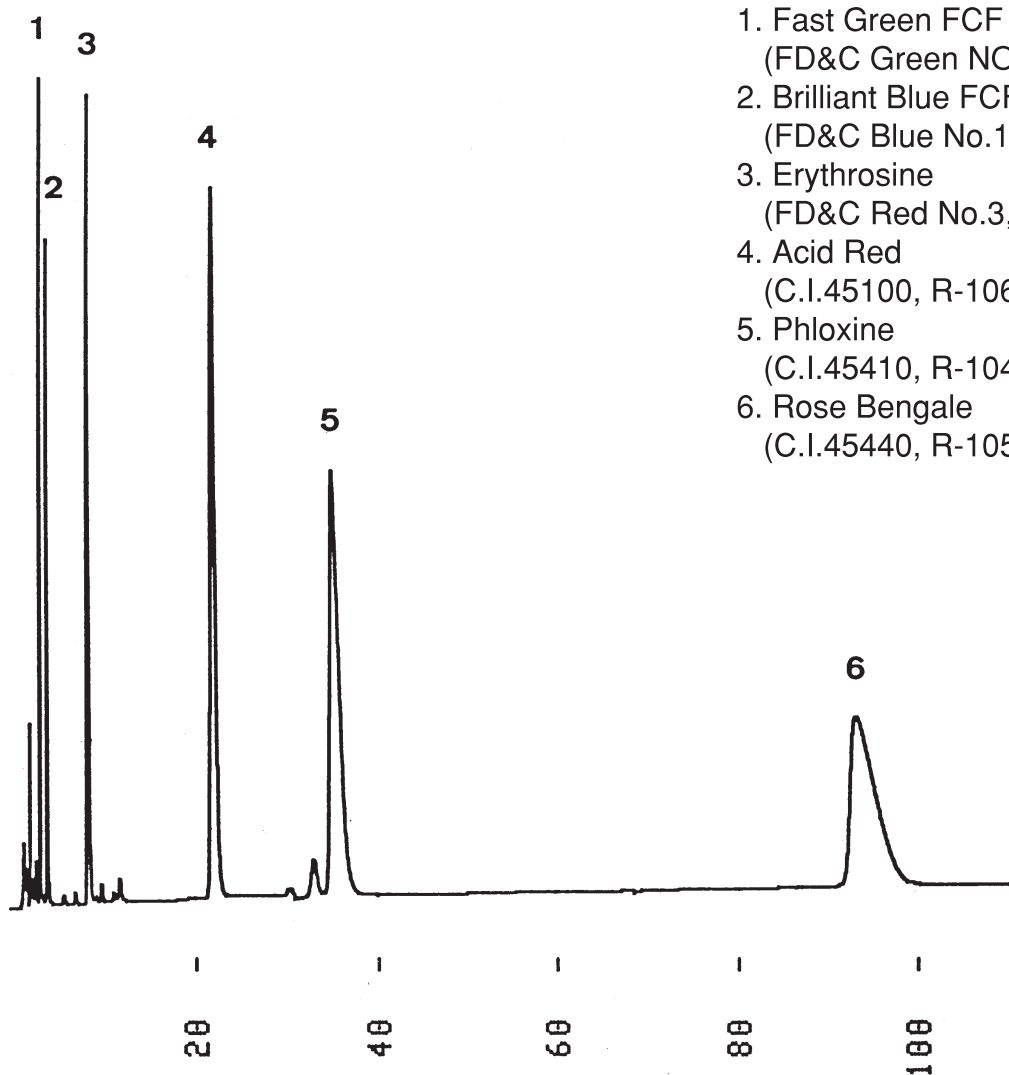


タール色素
Color additives

M910430C



1. Fast Green FCF
(FD&C Green NO.3, C.I.42053, G-3)
2. Brilliant Blue FCF
(FD&C Blue No.1, C.I.42090, B-1)
3. Erythrosine
(FD&C Red No.3, C.I.45430, R-3)
4. Acid Red
(C.I.45100, R-106)
5. Phloxine
(C.I.45410, R-104)
6. Rose Bengale
(C.I.45440, R-105)

Column : YMC-Pack ODS-A (5 μ m, 12nm)
150 \times 4.6 mm I.D.

Eluent : acetonitrile/10mM CH₃COONH₄ (25/75)

Flow rate : 1.0 mL/min

Temperature : 30 $^{\circ}$ C

Detection : UV at 254 nm, 0.08 AUFS

Injection : 10 μ L (35~140 μ g/mL)