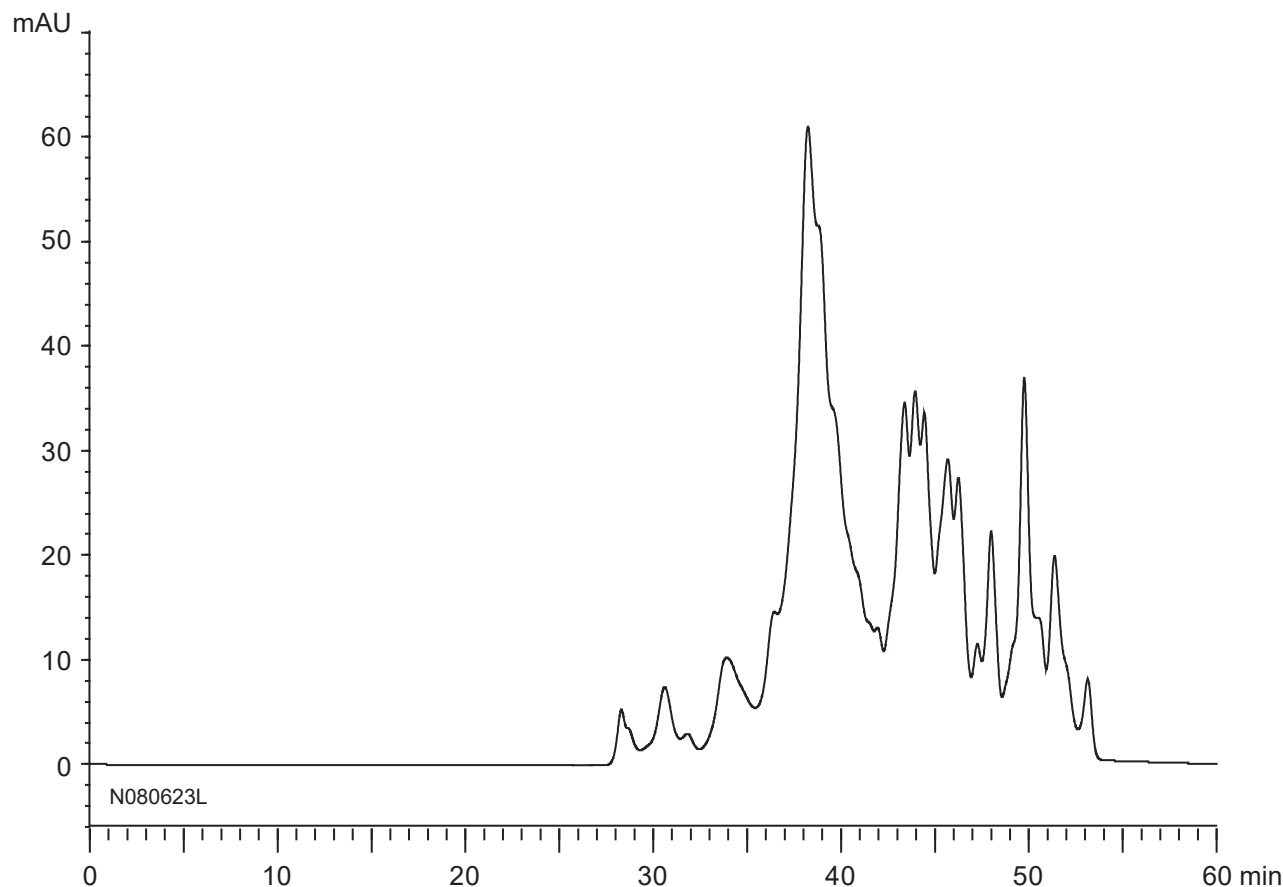


ペプチドマッピング  
Peptide mapping

N080623L



Column : YMC-Pack Diol-120 + Diol-60 (5  $\mu$ m)  
500 X 8.0 mm I.D. X 2

Eluent : 0.1 M  $\text{KH}_2\text{PO}_4$ - $\text{K}_2\text{HPO}_4$  (pH 7.0) containing 0.2 M NaCl / acetonitrile (70/30)

Flow rate : 0.7 mL/min

Temperature : ambient (25°C)

Detection : UV at 220 nm

Injection : 5  $\mu$ L

Sample : Tryptic digest of BSA