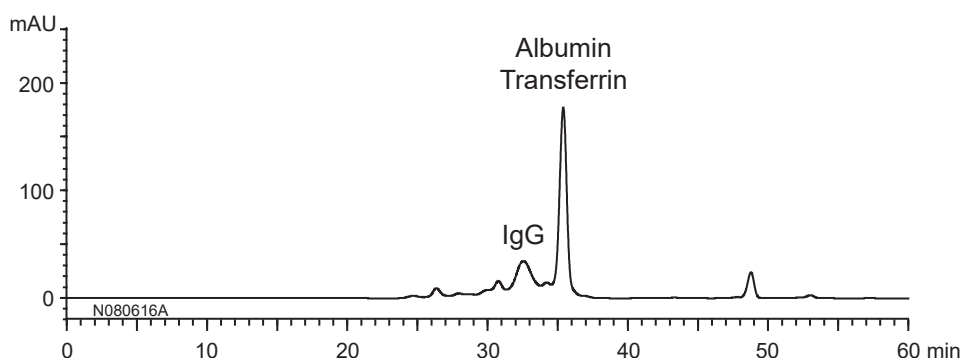


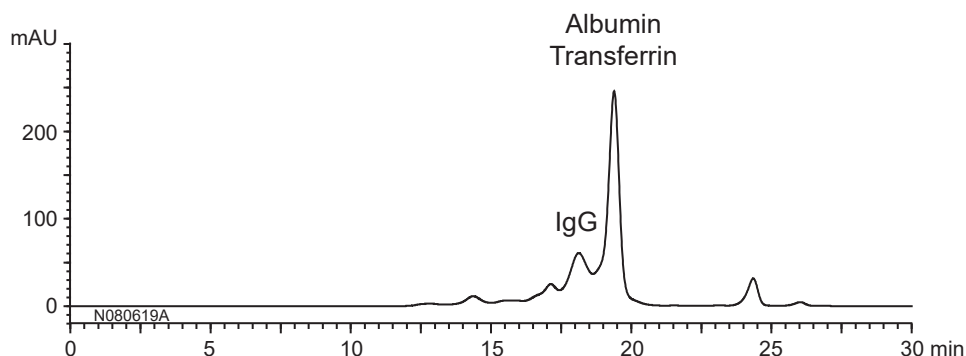
ヒト血清中のタンパク質
Proteins in human serum

N080702B

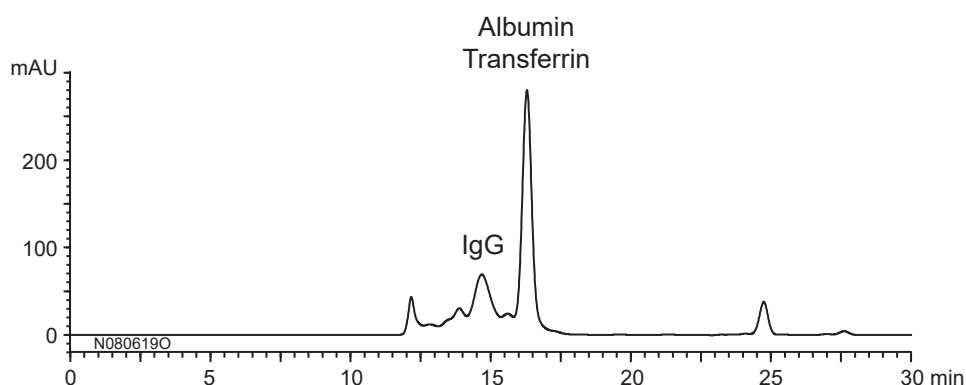
YMC-Pack Diol-300 + Diol-200
300 X 8.0 mmI.D. X 2



YMC-Pack Diol-300
300 X 8.0 mmI.D.



YMC-Pack Diol-200
300 X 8.0 mmI.D.



Column : YMC-Pack Diol (5 μ m)
 Eluent : 0.1 M KH_2PO_4 - K_2HPO_4 (pH 7.0) containing 0.2 M NaCl
 Flow rate : 0.5 mL/min
 Temperature : ambient (25°C)
 Detection : UV at 280 nm
 Injection : 20 μ L