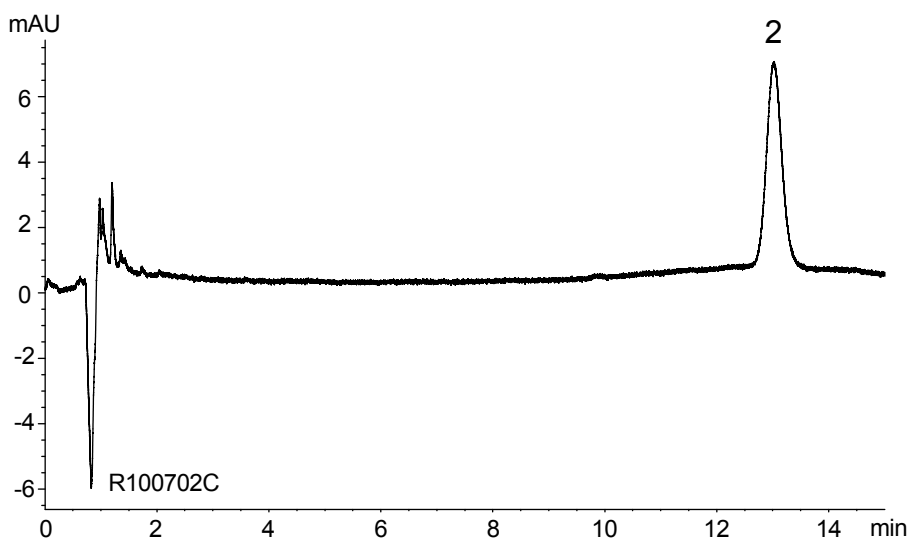


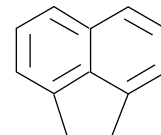
カンデサルタン シレキセチル錠
Candesartan cilexetil tablets

R100702P

Dissolution (2 μ g/mL, 50 μ L inj.)

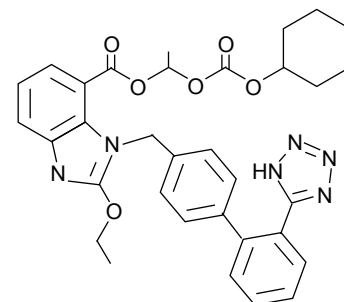


1.



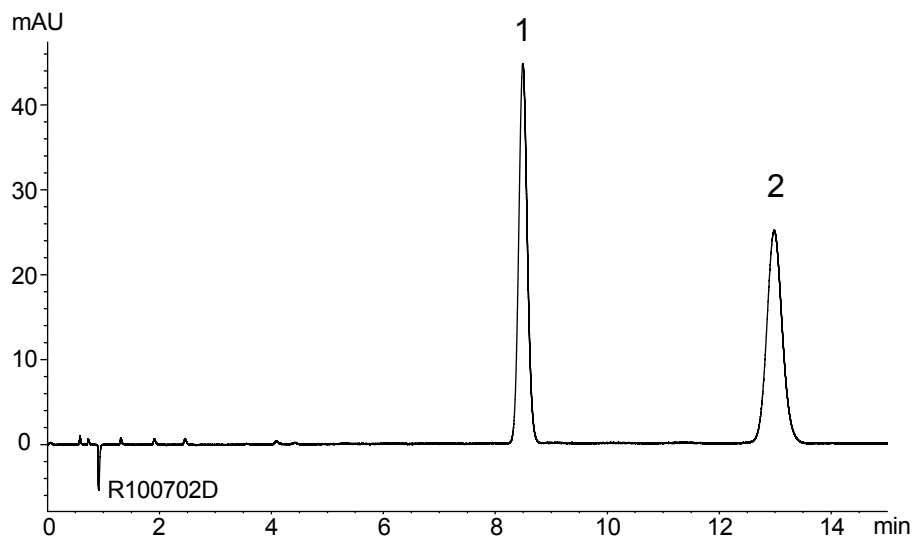
Acenaphthene

2.



Candesartan cilexetil

Assay (0.125 mg/mL, 0.04 mg/mL, 10 μ L inj.)



Column : J'sphere ODS-M80 (4 μ m, 8 nm)
150 X 4.0 mm I.D.
Eluent : acetonitrile/water/acetic acid (57/43/1)
Flow rate : 1.4 mL/min
Temperature : 25°C
Detection : UV at 254 nm

(日本薬局方収載原案記載条件)