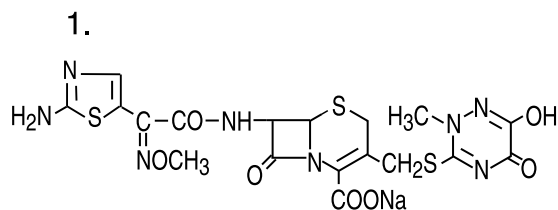
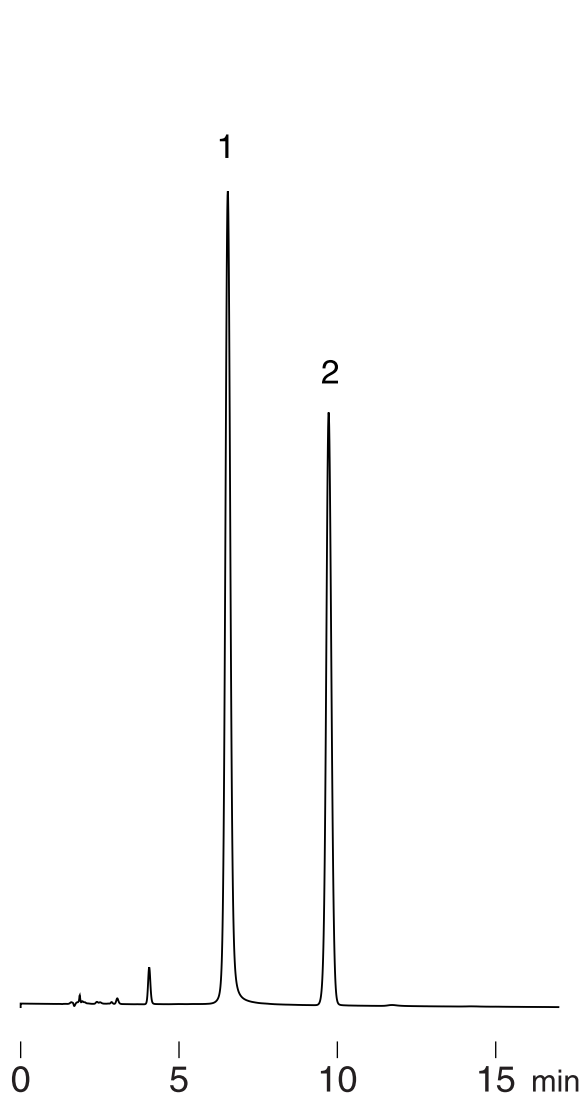
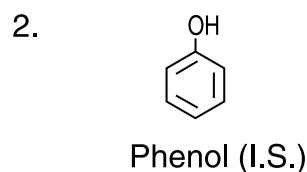


セフトリアキソン  
Ceftriaxone

S000726B



Ceftriaxone sodium



Column : Hydrosphere C18 (5  $\mu$ m, 12nm)  
150  $\times$  4.6 mm I.D.  
Eluent : methanol / 10mM H<sub>3</sub>PO<sub>4</sub> (25/75)  
Flow rate : 1.0 mL/min  
Temperature : 37  $^{\circ}$ C  
Detection : UV at 260 nm, 0.32 AUFS  
Injection : 10  $\mu$ L (0.1, 0.4 mg/mL)