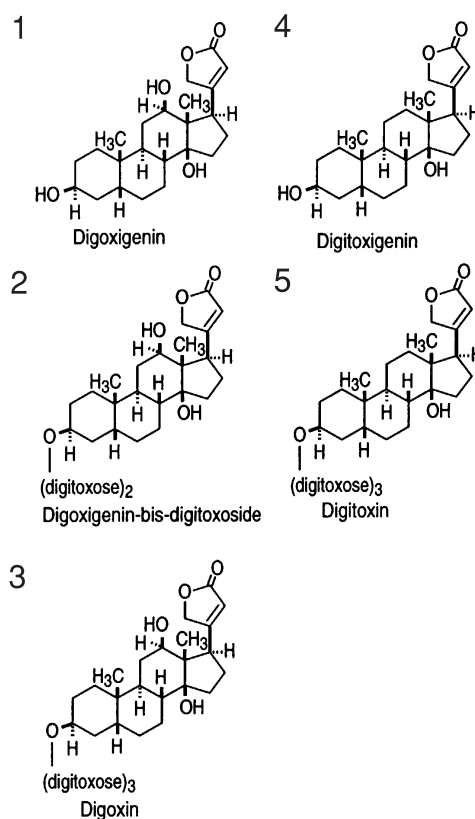
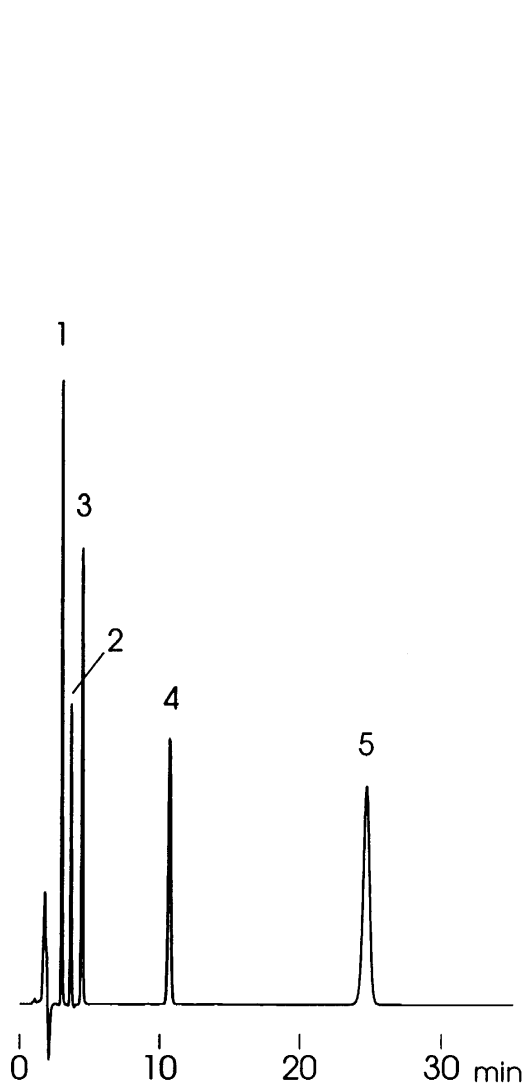


強心配糖体
Cardiac glycosides

S961126F



Column : YMC-Pack SIL (5 μ m, 12nm)
150 \times 4.6 mm I.D.

Eluent : cyclohexane/dichloromethane/acetic acid (100/0.5/0.5)

Flow rate : 1.0 mL/min

Temperature : 30 $^{\circ}$ C

Detection : UV at 350 nm, 0.32 AUFS

Injection : 5 μ L (1.0 mg/mL)