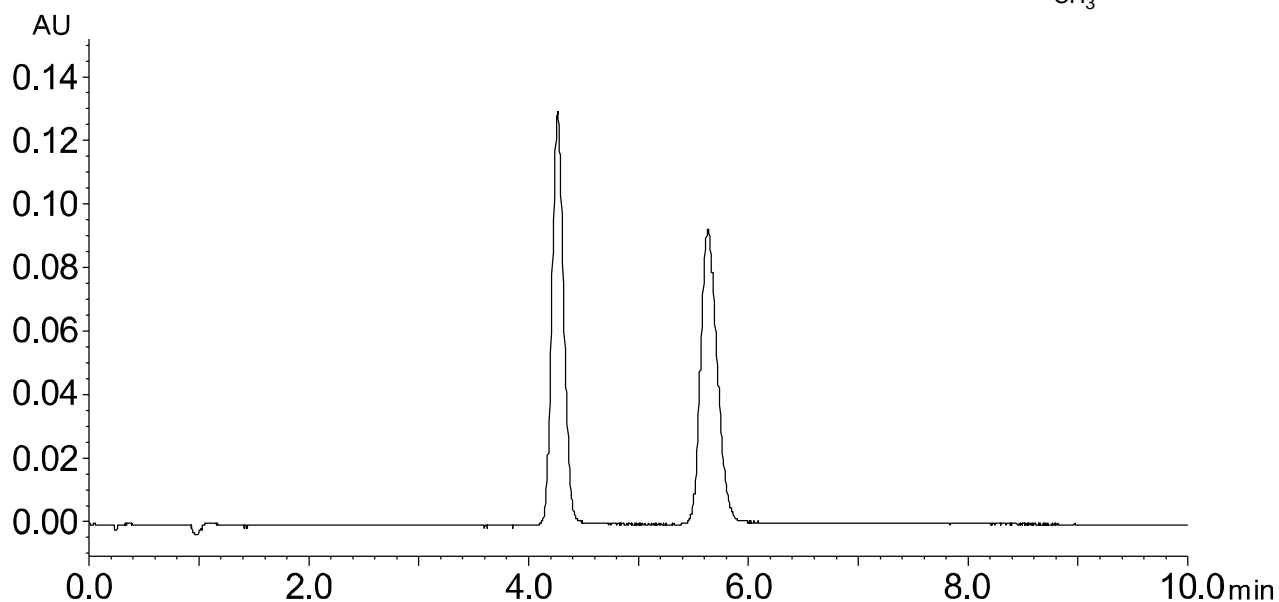
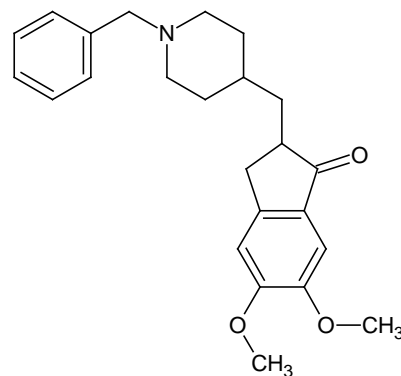


ドネペジル
Donepezil

T150609I



Column	: Alcyon SFC CSP Cellulose-C (5 μ m) 250 X 4.6 mm I.D.
Eluent	: CO ₂ /2-propanol containing 0.1% DEA (70/30)
Flow rate	: 3.0 mL/min
Temperature	: 35°C
Detection	: UV at 268 nm
Backpressure	: 13.8 MPa (2000 psi)
Injection	: 5 μ L (1.0 mg/mL)