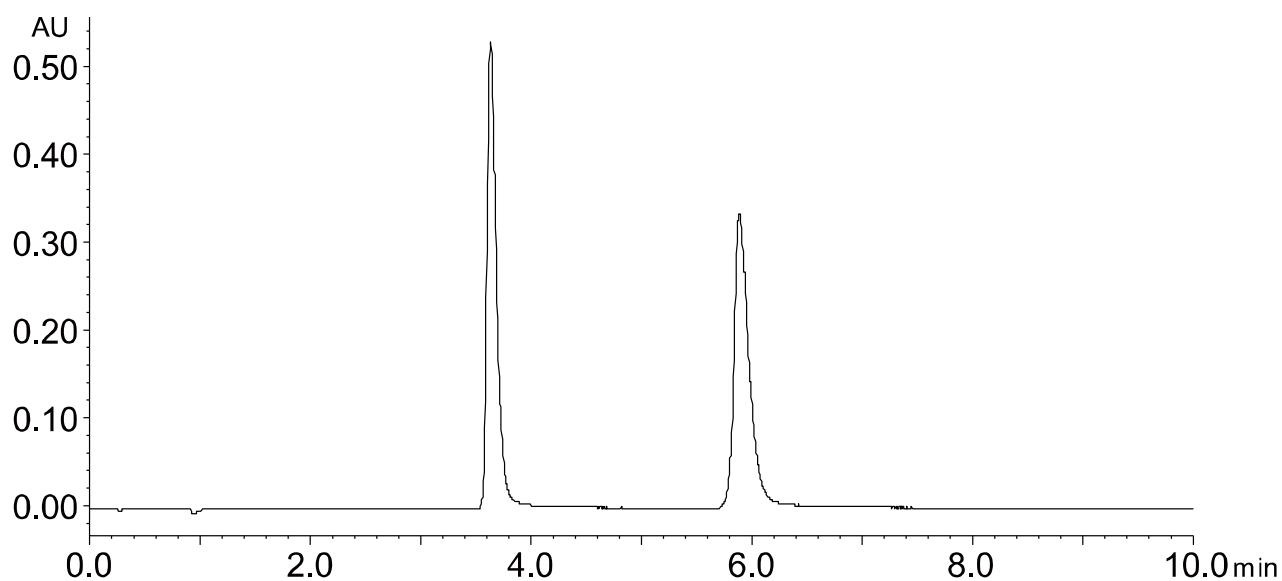
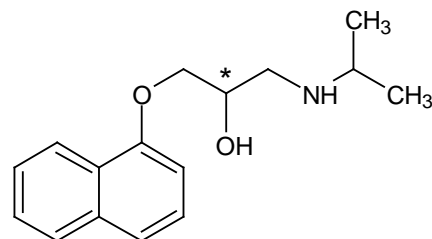


プロプラノロール
Propranolol

T150609L



Column : Alcyon SFC CSP Cellulose-C (5 μ m)
250 X 4.6 mm I.D.

Eluent : CO₂/methanol containing 0.1% DEA (80/20)

Flow rate : 3.0 mL/min

Temperature : 35°C

Detection : UV at 230 nm

Backpressure : 13.8 MPa (2000 psi)

Injection : 5 μ L (1.0 mg/mL)