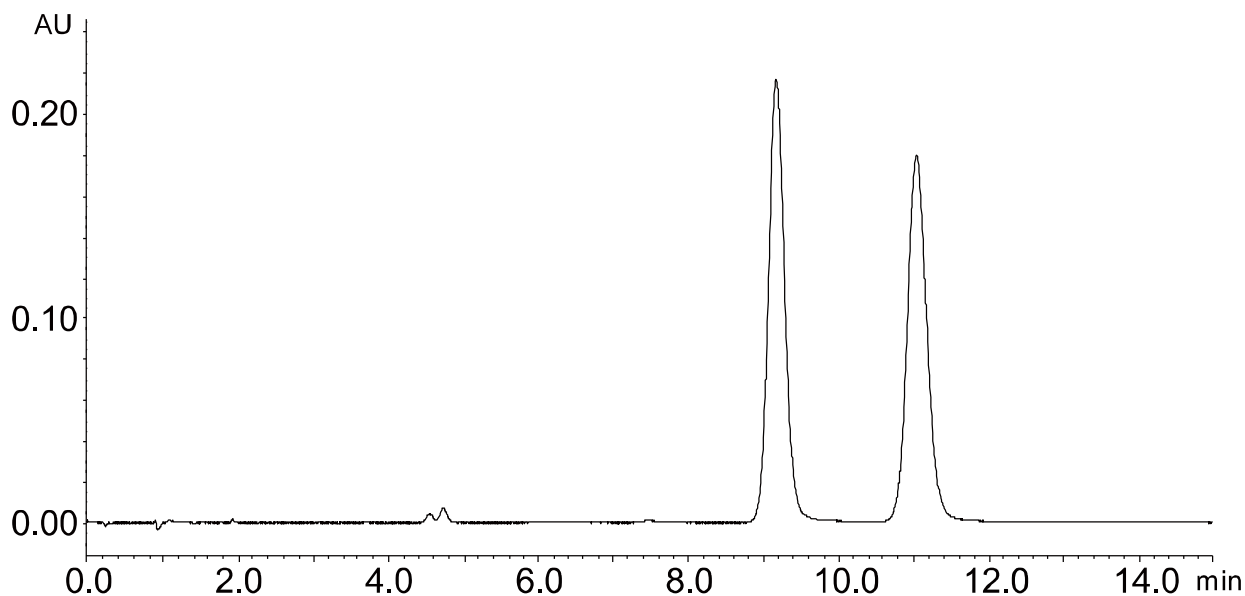
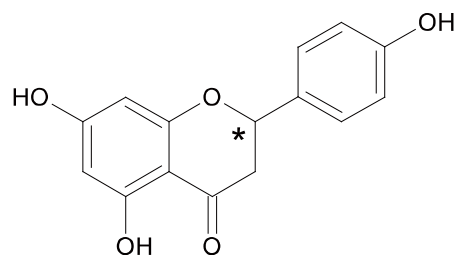


ナリンゲニン
Naringenin

T150610AT



Column : Alcyon SFC CSP Cellulose-SB (5 μ m)
250 X 4.6 mmI.D.
Eluent : CO₂/2-propanol (80/20)
Flow rate : 3.0 mL/min
Temperature : 35°C
Detection : UV at 220 nm
Backpressure : 13.8 MPa (2000 psi)
Injection : 5 μ L (1.0 mg/mL)