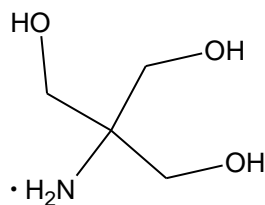
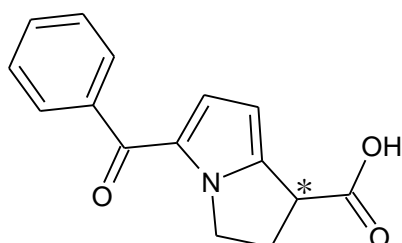
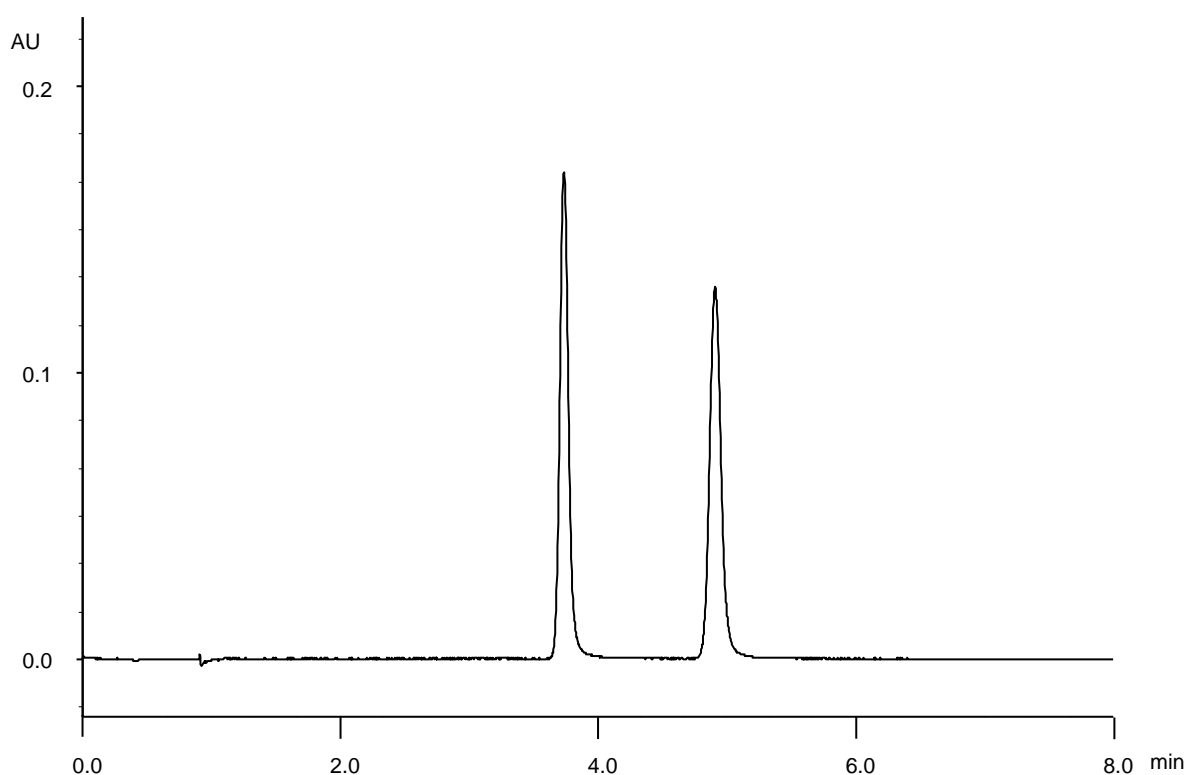


ケトロラクトロメタミン
Ketorolac tromethamine

T180319I



α	1.4
Rs	8.4



Column : Alcyon SFC CSP Cellulose-SJ (5 μ m)
250 X 4.6 mmI.D.
Eluent : CO₂/methanol (85/15)
Flow rate : 3.0 mL/min
Temperature : 35°C
Detection : UV at 305 nm
Backpressure : 13.8 MPa (2000 psi)
Injection : 2 μ L (1 mg/mL)