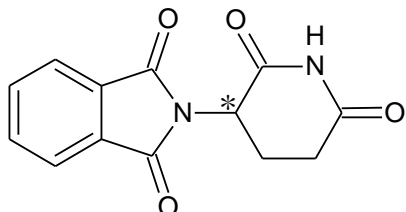
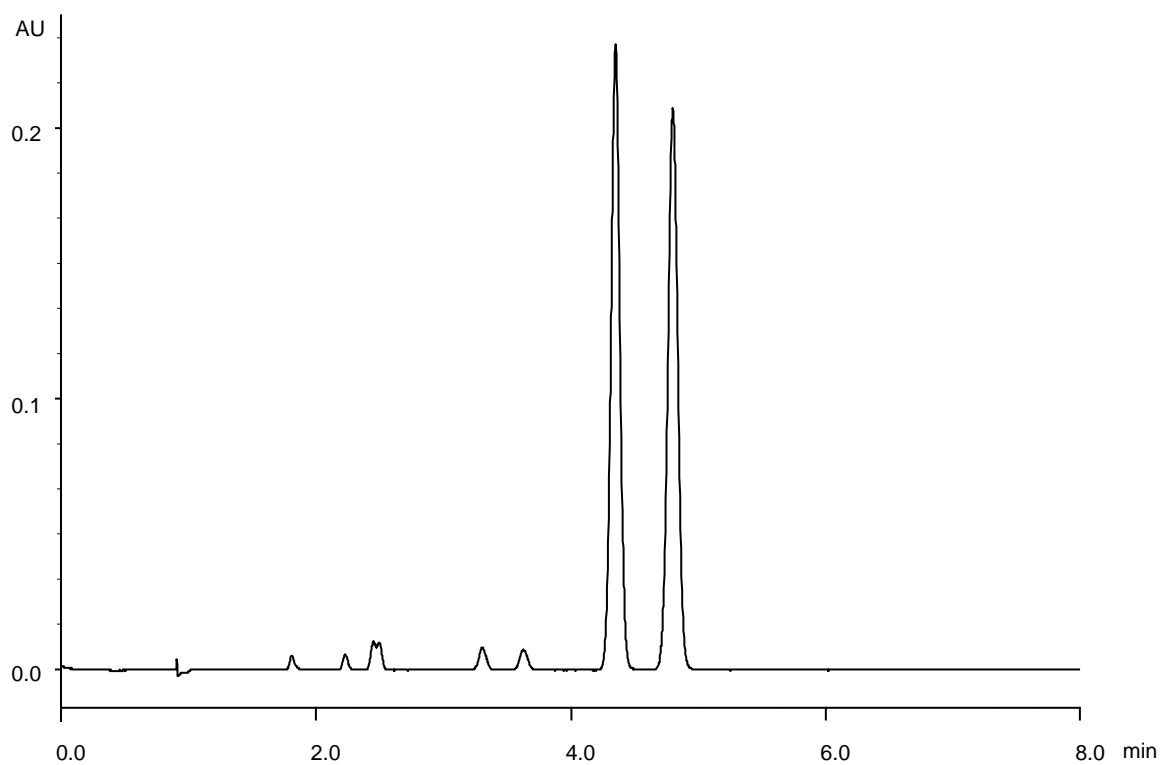


(±)-サリドマイド  
(±)-Thalidomide

T180319K



$\alpha$	1.1
$R_s$	3.3



Column : Alcyon SFC CSP Cellulose-SJ (5  $\mu$ m)  
250 X 4.6 mm I.D.

Eluent : CO<sub>2</sub>/methanol (85/15)

Flow rate : 3.0 mL/min

Temperature : 35°C

Detection : UV at 220 nm

Backpressure : 13.8 MPa (2000 psi)

Injection : 2  $\mu$ L (0.5 mg/mL)