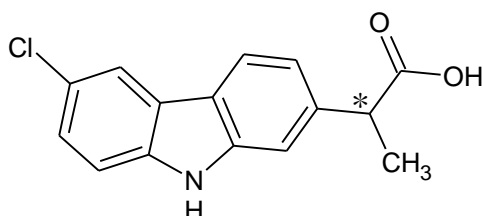
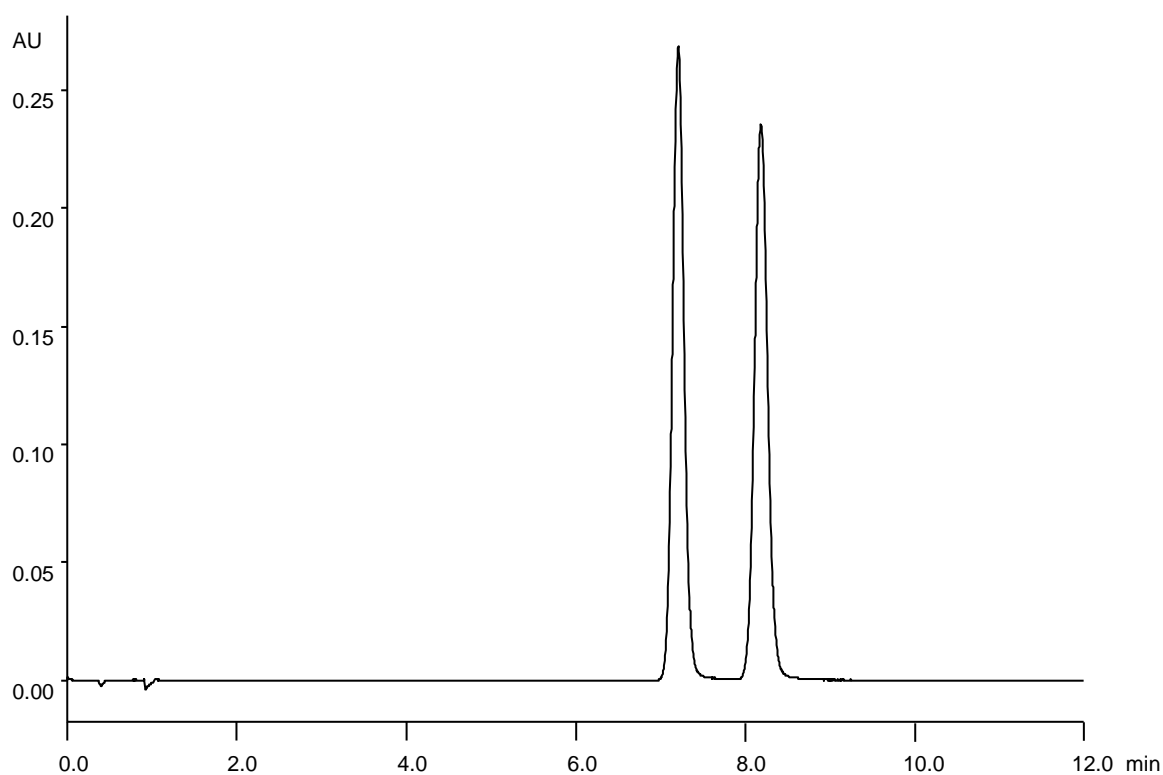


カルプロフェン
Carprofen

T180319U



α	1.2
Rs	3.7



Column : Alcyon SFC CSP Cellulose-SJ (5 μ m)
250 X 4.6 mm I.D.

Eluent : CO₂/methanol (75/25)

Flow rate : 3.0 mL/min

Temperature : 35°C

Detection : UV at 230 nm

Backpressure : 13.8 MPa (2000 psi)

Injection : 2 μ L (1 mg/mL)