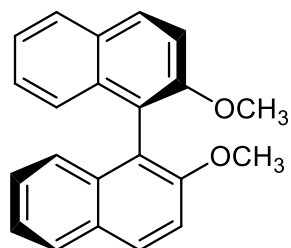
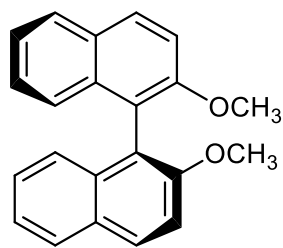


2,2'-ジメトキシ-1,1'-ビナフチル  
2,2'-Dimethoxy-1,1'-binaphthyl

T180319X

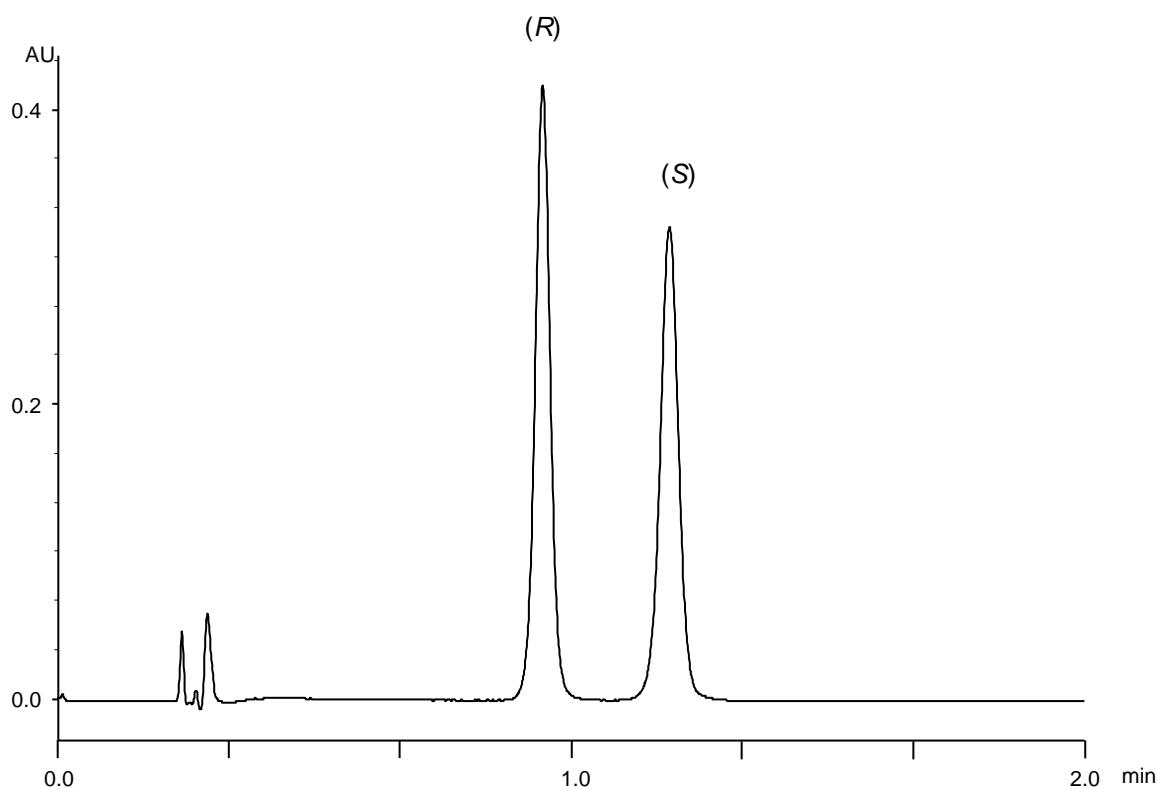


(R)



(S)

$\alpha$	1.4
$R_s$	4.2



Column : Alcyon SFC CSP Cellulose-SJ (3  $\mu$ m)  
50 X 3.0 mm I.D.

Eluent : CO<sub>2</sub>/methanol (75/25)

Flow rate : 1.275 mL/min

Temperature : 35°C

Detection : UV at 230 nm

Backpressure : 13.8 MPa (2000 psi)

Injection : 0.7  $\mu$ L (0.15 mg/mL)