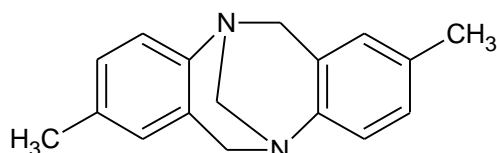
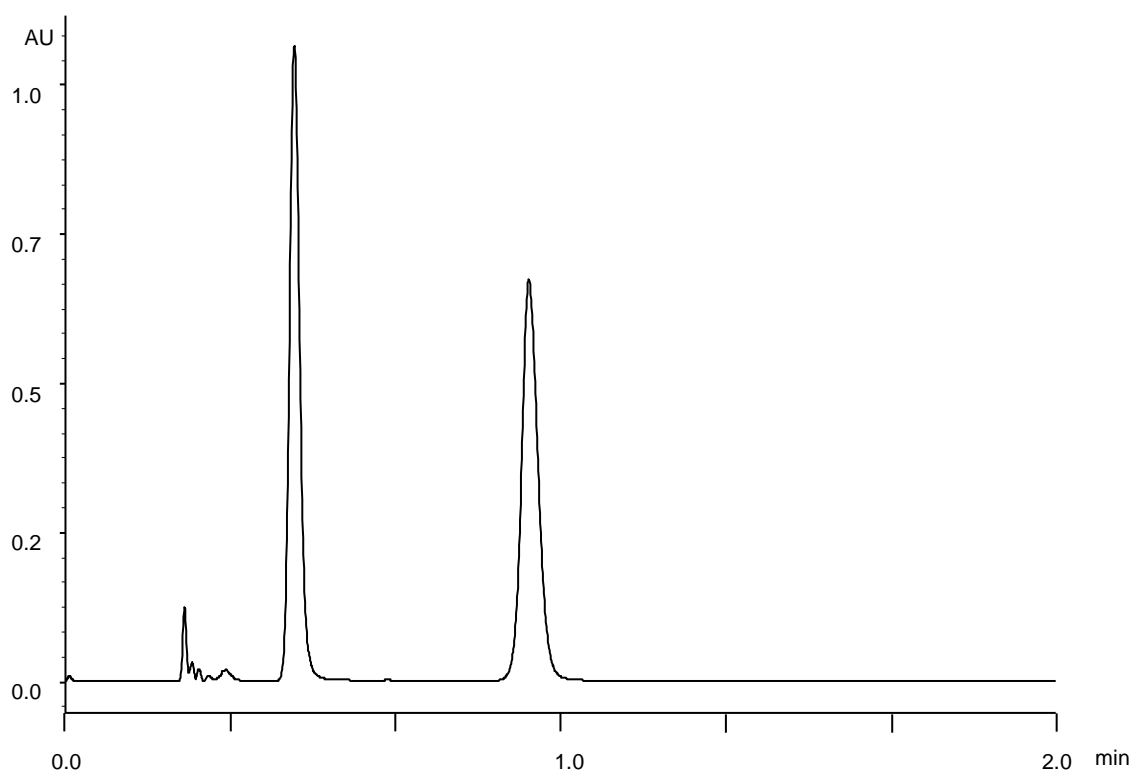


トレガー塩基  
Troger's Base

T180319Z



$\alpha$	3.2
Rs	9.8



Column : Alcyon SFC CSP Cellulose-SJ (3  $\mu$ m)  
50 X 3.0 mmI.D.

Eluent : CO<sub>2</sub>/2-propanol (75/25)

Flow rate : 1.275 mL/min

Temperature : 35°C

Detection : UV at 210 nm

Backpressure : 13.8 MPa (2000 psi)

Injection : 0.7  $\mu$ L (1 mg/mL)