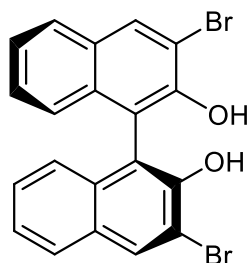


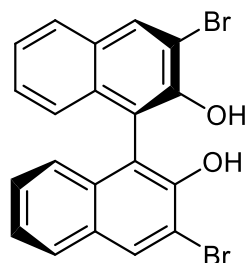
3,3'-ジブromo-1,1'-ビ-2-ナフトール

3,3'-Dibromo-1,1'-bi-2-naphthol

T180320AD

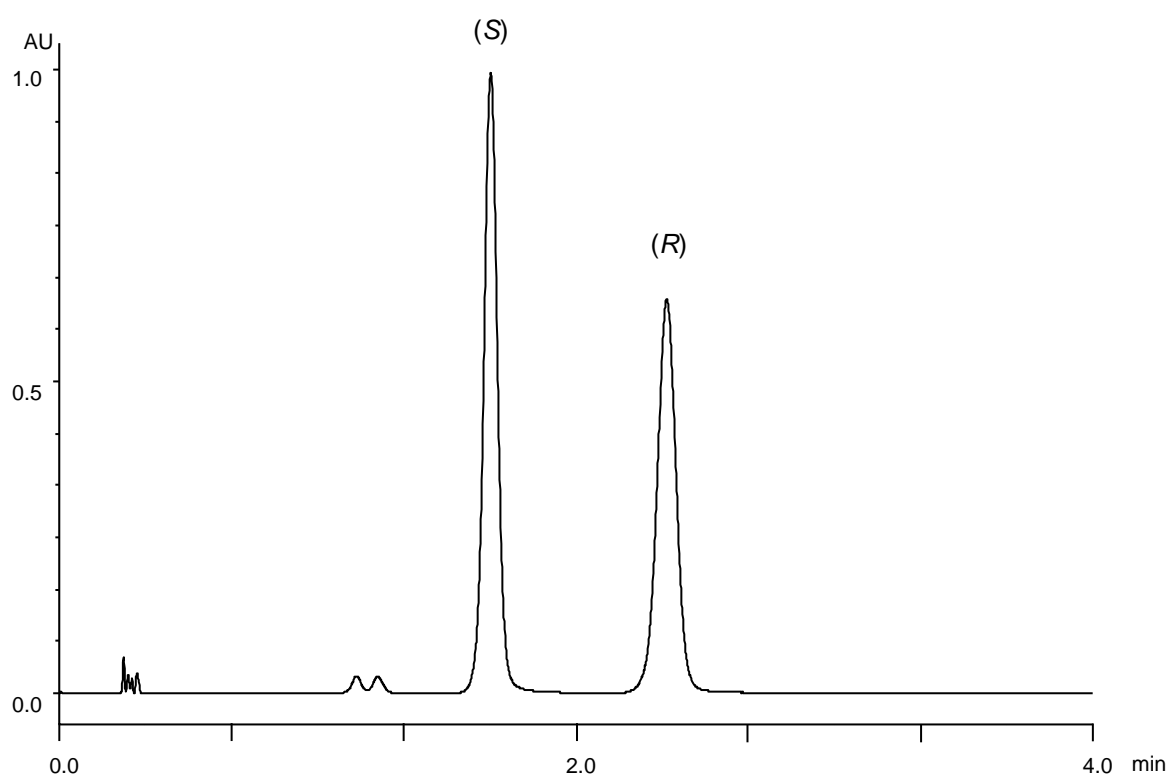


(S)



(R)

α	1.5
Rs	6.0



Column : Alcyon SFC CSP Cellulose-SJ (3 μ m)
50 X 3.0 mm I.D.

Eluent : CO₂/methanol/acetonitrile (75/12.5/12.5)

Flow rate : 1.275 mL/min

Temperature : 35°C

Detection : UV at 230 nm

Backpressure : 13.8 MPa (2000 psi)

Injection : 0.4 μ L (1 mg/mL)