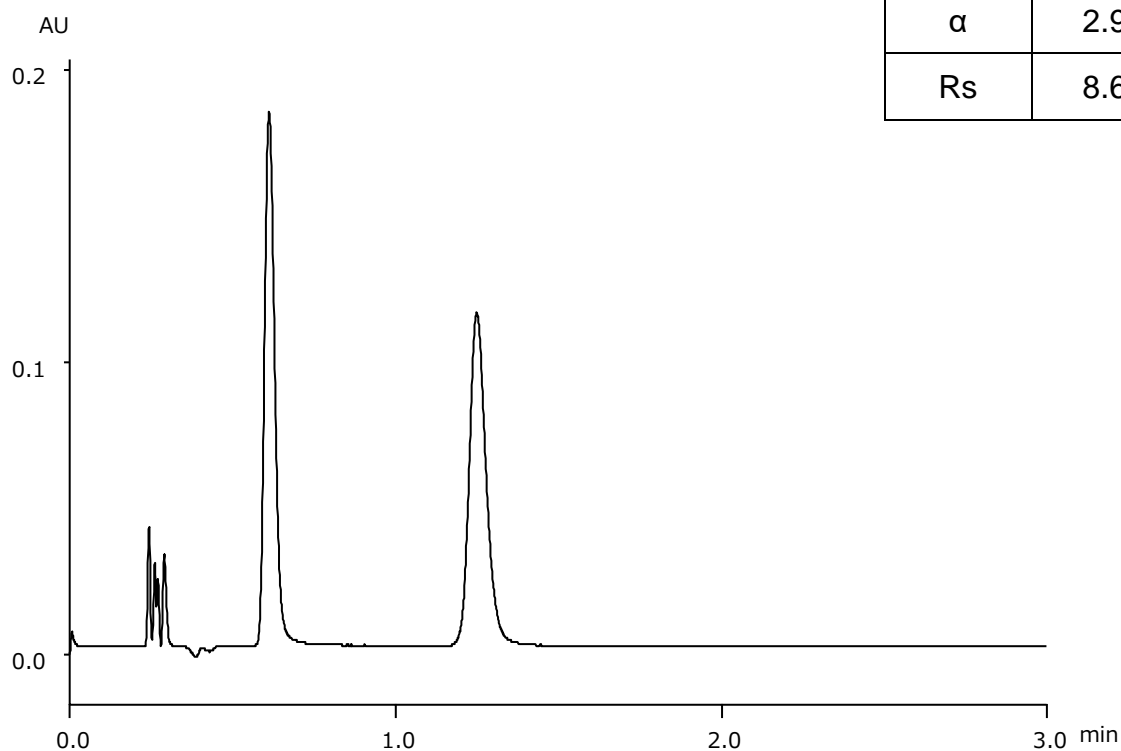
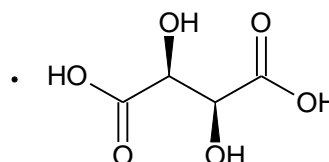
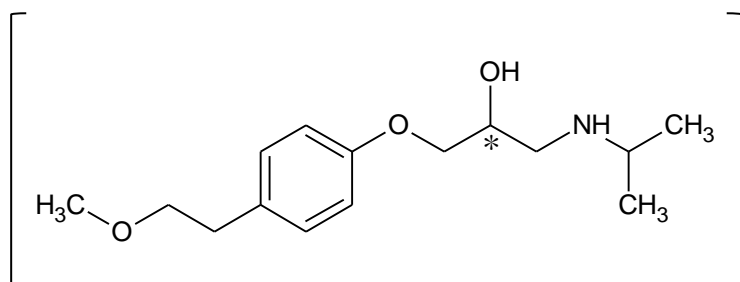


メトプロロール酒石酸塩

Metoprolol tartrate

T180410C



Column : Alcyon SFC CSP Cellulose-SJ (3 μ m)
50 X 3.0 mmI.D.

Eluent : CO₂/methanol containing 0.1 %diethylamine (85/15)

Flow rate : 1.275 mL/min

Temperature : 35°C

Detection : UV at 220 nm

Backpressure : 13.8 MPa (2000 psi)

Injection : 0.7 μ L (1 mg/mL)