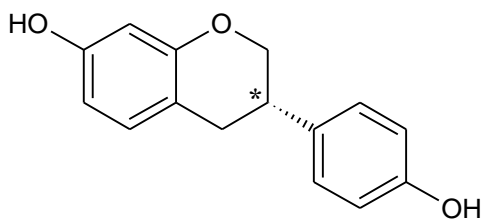
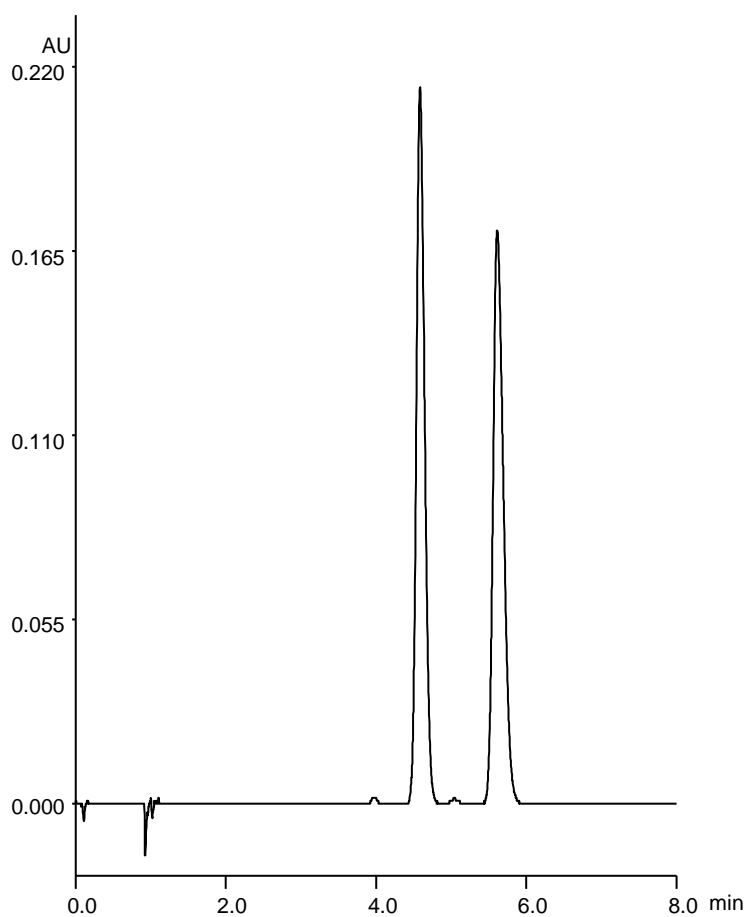


エクオール
Equol

T180605A



α	1.3
Rs	4.5



Column : Alcyon SFC CSP Amylose-C Neo (5 μ m)
250 X 4.6 mm I.D.

Eluent : CO₂/methanol (70/30)

Flow rate : 3.0 mL/min

Temperature : 35°C

Detection : UV at 280 nm

Backpressure : 13.8 MPa (2000 psi)

Injection : 10 μ L (1 mg/mL)