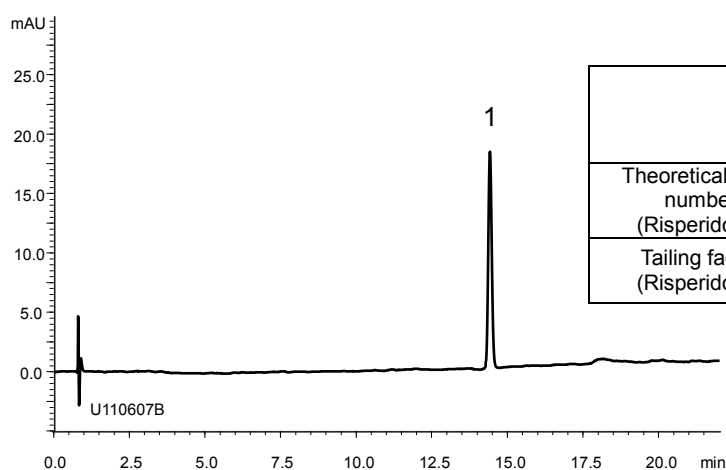


リスペリドン  
Risperidone

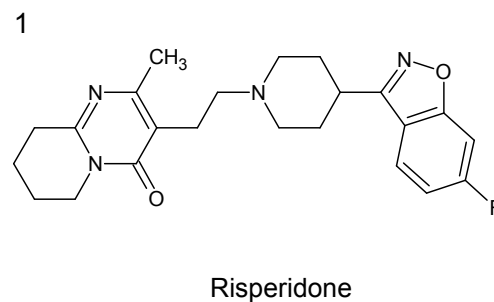
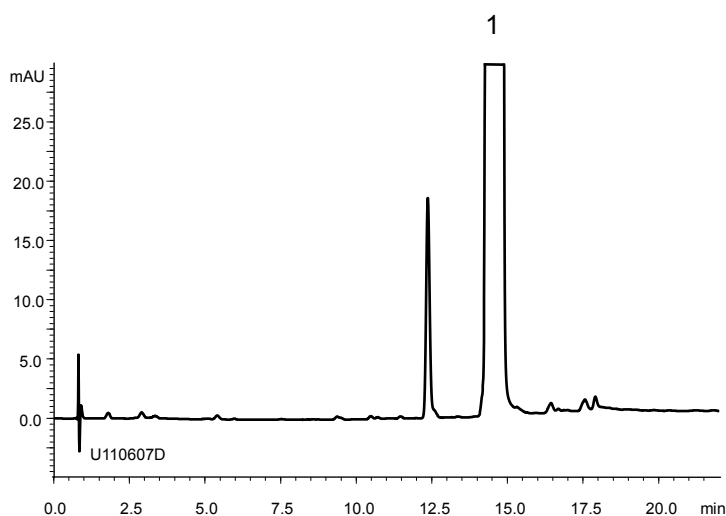
U110611A

(A) Standard solution (0.02 mg/mL Risperidone)



	System suitability requirement	result
Theoretical plate number (Risperidone)	$\geq 10000$	71800
Tailing factor (Risperidone)	$\leq 2.0$	1.14

(B) Sample solution (10 mg/mL Risperidone)



Column : YMC-Triart C18 (3  $\mu$ m, 12 nm)  
100 X 4.6 mmI.D.

Eluent : A) 65 mM CH<sub>3</sub>COONH<sub>4</sub>  
B) methanol  
30%B (0-2 min), 30-70%B (2-17 min), 70%B (17-22 min)

Flow rate : 1.5 mL/min

Temperature : 30°C

Detection : UV at 260 nm

Injection : 10  $\mu$ L

(The Japanese Pharmacopoeia 16th; Related substances)