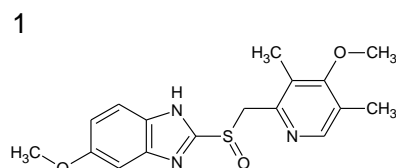
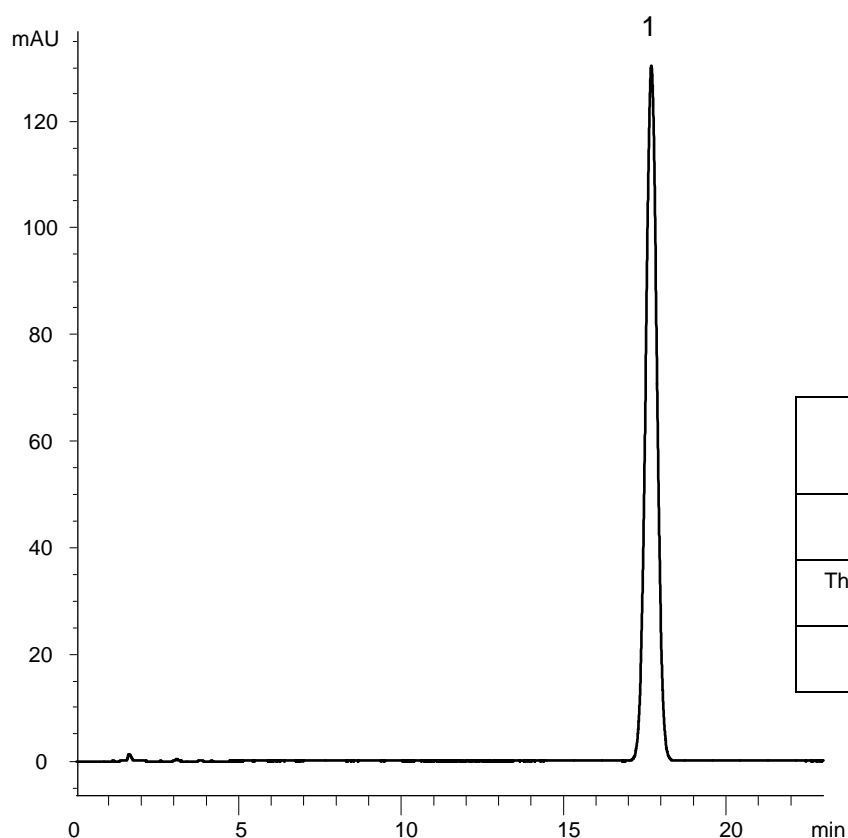


オメプラゾール
Omeprazole

U111102D



Omeprazole

	System suitability requirement	result
Capacity factor (Omeprazole)	≥ 6.0	9.9
Theoretical plate number (Omeprazole)	≥ 3000	12200
Tailing factor (Omeprazole)	≤ 1.5	1.00

Column : YMC-Triart C8 (5 μ m, 12 nm)
150 X 4.6 mm I.D.

Eluent : phosphate buffer (pH 7.6)* / acetonitrile (3/1)

**Dissolve 2.83 g of Na₂HPO₄ · 12H₂O and 0.21 g of NaH₂PO₄ · 2H₂O in 1000 mL water, adjust pH 7.6 with H₃PO₄ (1 → 100)*

Flow rate : 0.8 mL/min

Temperature : 25°C

Detection : UV at 280 nm

Injection : 20 μ L (0.1 mg/mL)

(The United States Pharmacopeia 34th; Assay)