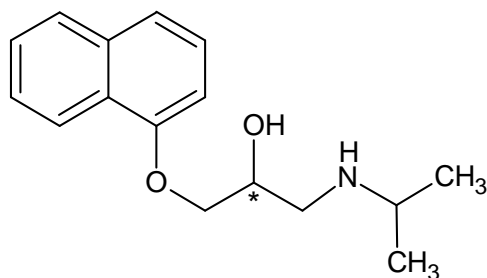
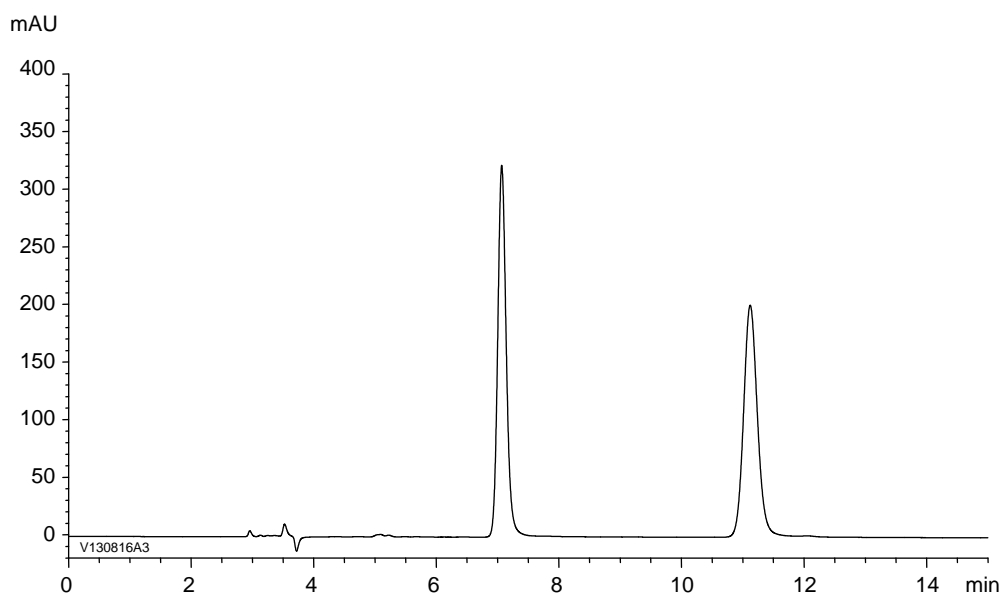


プロプラノロール
Propranolol

V130816A



α	2.0
Rs	12.6



Column : CHIRALART Cellulose-C (5 μ m)
250 X 4.6 mm I.D.
Eluent : *n*-hexane/2-propanol/diethylamine (80/20/0.1)
Flow rate : 1.0 mL/min
Temperature : 25°C
Detection : UV at 230 nm
Injection : 10 μ L (0.1 mg/mL)