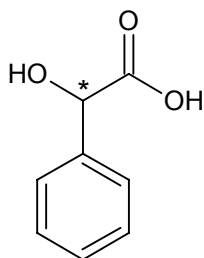
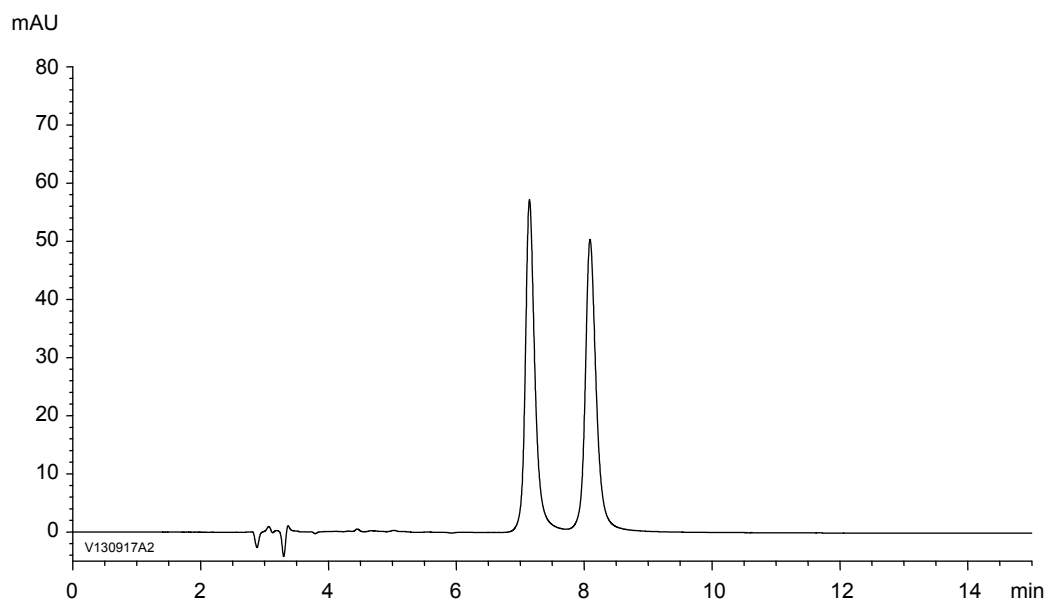


DL-マンデル酸
DL-Mandelic acid

V130917A



α	1.2
R_s	3.5



Column : CHIRAL ART Amylose-C (5 μ m)
250 X 4.6 mmI.D.
Eluent : *n*-hexane/2-propanol/TFA (80/20/0.1)
Flow rate : 1.0 mL/min
Temperature : 25°C
Detection : UV at 254 nm
Injection : 20 μ L (1 mg/mL)