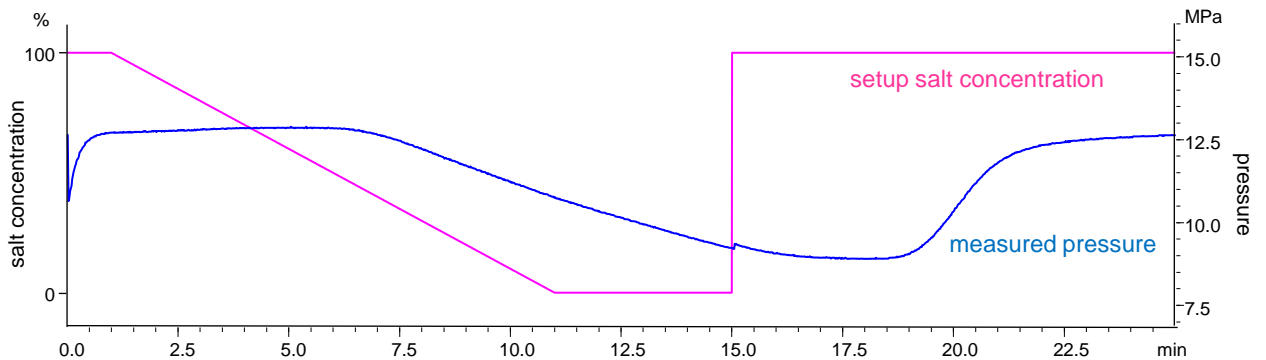
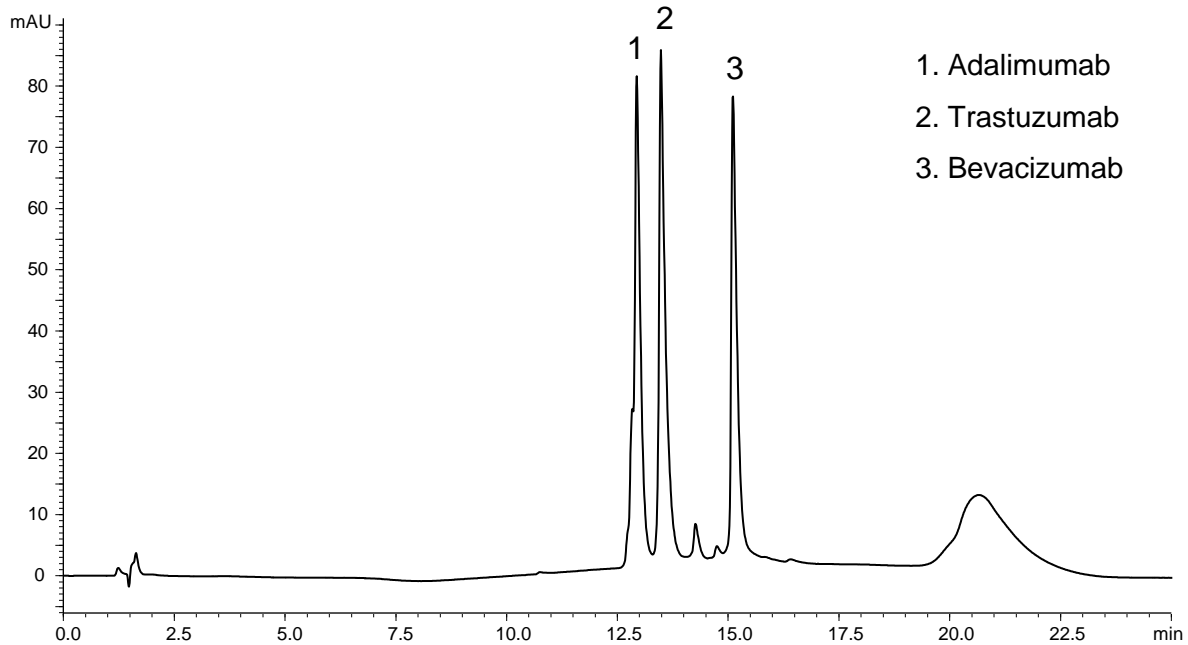


抗体医薬品  
Antibody drugs

W191118F



Column : BioPro HIC HT (2.3  $\mu$ m)

100 X 4.6 mm I.D.

Eluent : A) 100 mM  $\text{NaH}_2\text{PO}_4$ - $\text{Na}_2\text{HPO}_4$  (pH 7.0) containing 2.0 M  $(\text{NH}_4)_2\text{SO}_4$

B) 100 mM  $\text{NaH}_2\text{PO}_4$ - $\text{Na}_2\text{HPO}_4$  (pH 7.0)

0%B (0-1 min), 0-100%B (1-11 min), 100%B (11-15 min), 0%B (15-25 min)

Flow rate : 0.5 mL/min

Temperature : 25°C

Detection : UV at 280 nm

Injection : 15  $\mu$ L (0.5 mg/mL)