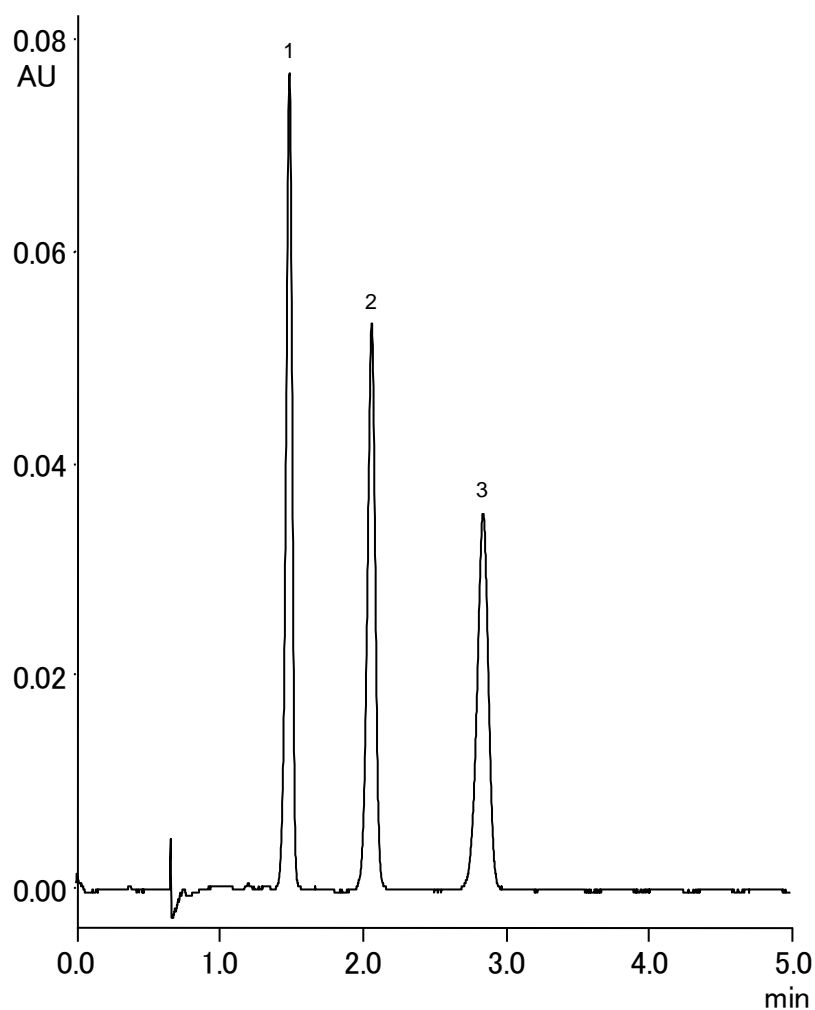
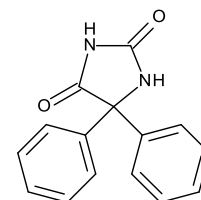


抗てんかん薬
Antiepileptics

X160419E

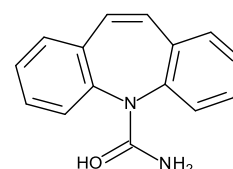


1.



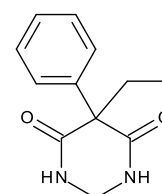
Phenytoin

2.



Carbamazepine

3.



Primidone

Column	: Alcyon SFC SIL (5 μm, 12 nm) 150 X 4.6 mm I.D.
Eluent	: CO ₂ /methanol 0.1%DEA (90/10)
Flow rate	: 3.0 mL/min
Temperature	: 40°C
Detection	: UV at 254 nm
Back Pressure	: 13.8 MPa (2000 psi)
Injection	: 5 μL (0.11 mg/mL – 8.8 mg/mL)