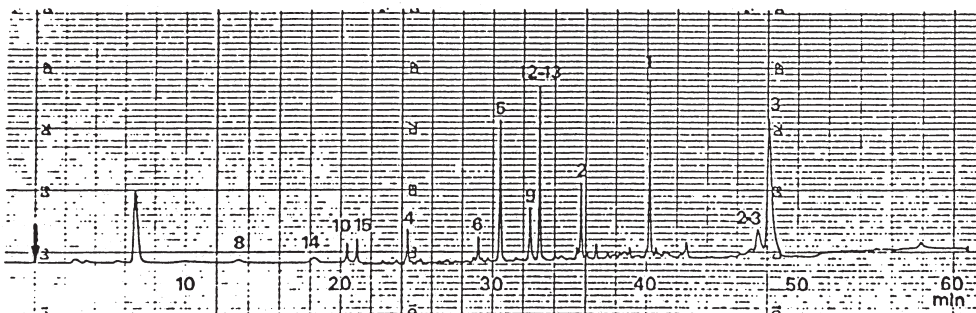
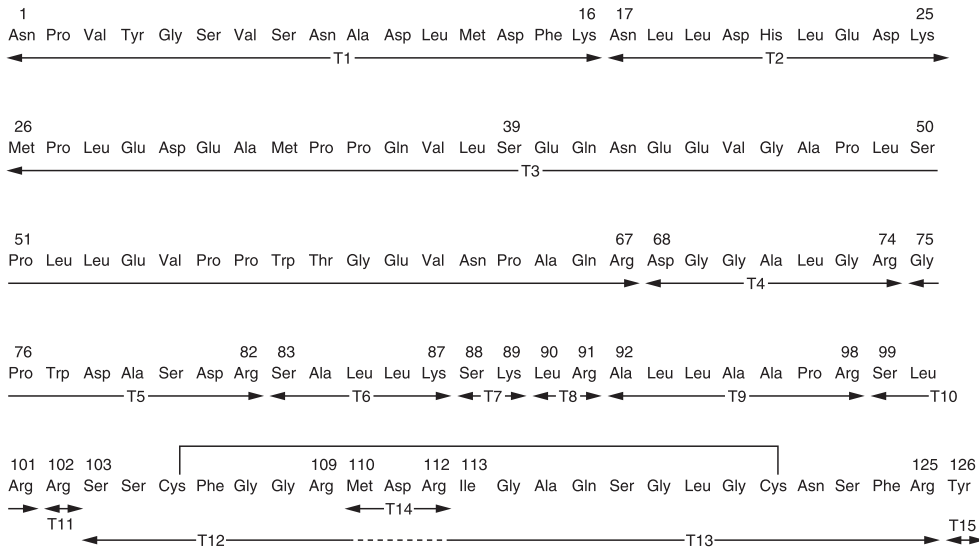


ペプチドマップ  
Peptide mapping

Y890712B



Courtesy of Dr.Nokihara, GBF-Gesellschaft für Biotechnologische Forschung

Column : YMC-Pack ODS/R (5  $\mu$ m, 12nm)  
250  $\times$  4.6 mm I.D.

Eluent : A)0.01N HCl  
B)acetonitrile  
0%B (0min),0%B (10min),50%B (60min,linear)

Flow rate : 1.0 mL/min

Detection : UV 210 nm

Sample : Tryptic digests of synthetic pCDD 126