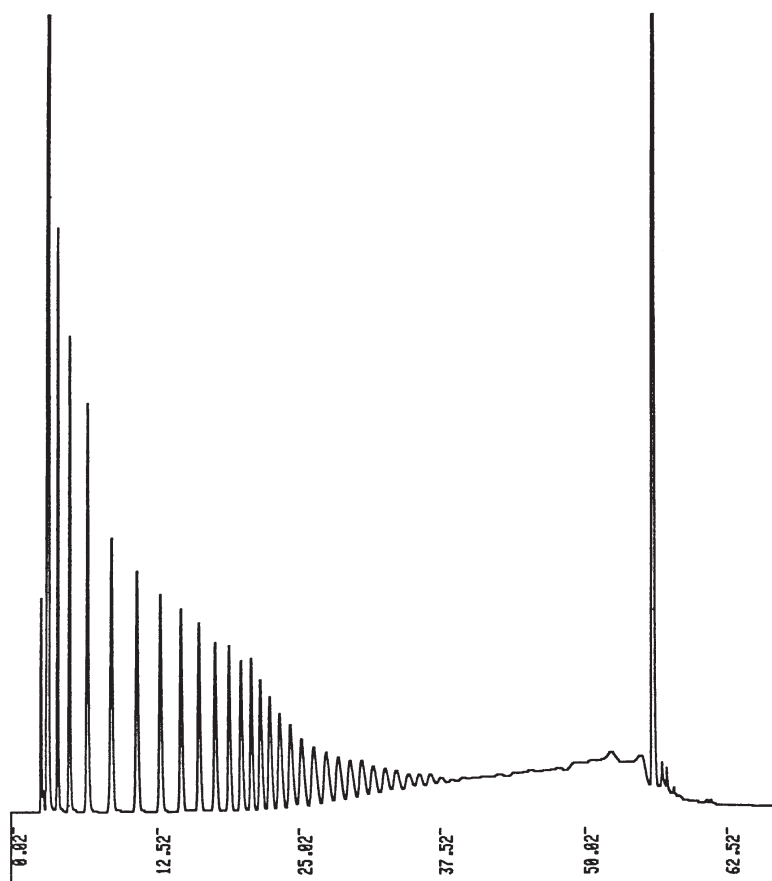


オリゴヌクレオチド, poly(A)
Poly(A)

Y920608A



Courtesy of Dr.Y.Baba, Kobe Women's College of Pharmacy

Column	: YMC-Pack ODS-AM (5 μ m, 12nm) 150 \times 6.0 mm I.D.
Eluent	: A)0.1M phosphate buffer (pH 7) B)0.1M phosphate buffer (pH 7) / acetonitrile (75/25) 20-27%B (0-15min), 27-35%B (15-90min)
Flow rate	: 1.0 mL/min
Temperature	: ambient
Detection	: UV at 260 nm
Injection	: 10 μ L
Sample	: Poly(A)