

For Monoclonal Antibody (MAb) Separation

YMC-SEC MAB

Features

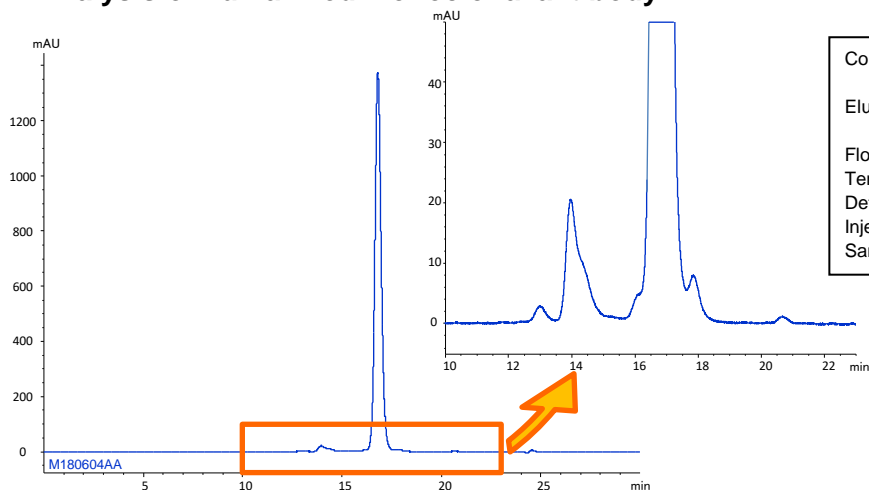
- Silica based SEC column optimized for MAb separation
- Suitable for separation of aggregates and fragments of MAb
- Excellent resolution and peak shapes

Specifications

Base	: Silica gel
Particle size	: 3 μm
Pore size	: 250 \AA
Functional group	: Dihydroxypropyl
Molecular weight range	: 10,000-700,000

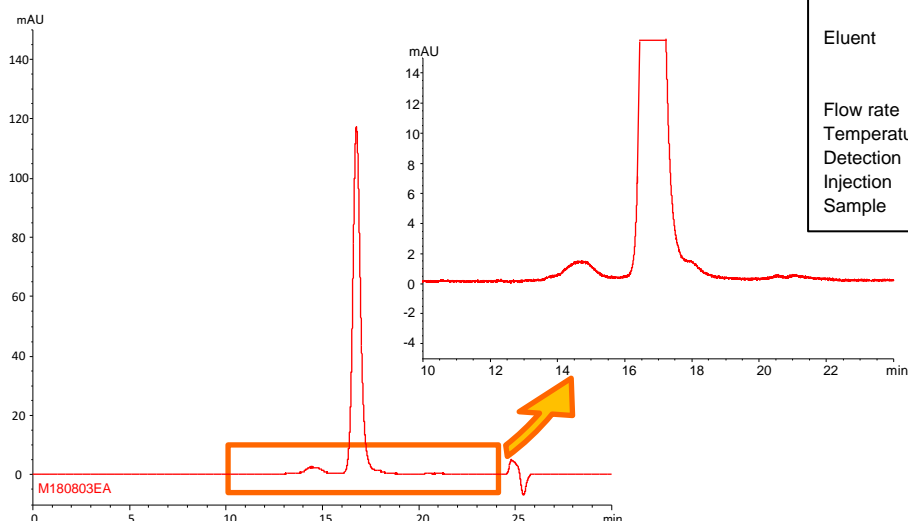
Suitable for separation of aggregates

Analysis of humanized monoclonal antibody



Column	: YMC-SEC MAB (3 μm , 250 \AA) 300 X 4.6 mm I.D.
Eluent	: 0.1 M KH_2PO_4 - K_2HPO_4 (pH 7.0) containing 0.2 M NaCl
Flow rate	: 0.165 mL/min
Temperature	: 25°C
Detection	: UV at 280 nm
Injection	: 10 μL
Sample	: Humanized monoclonal antibody (5 mg/mL)

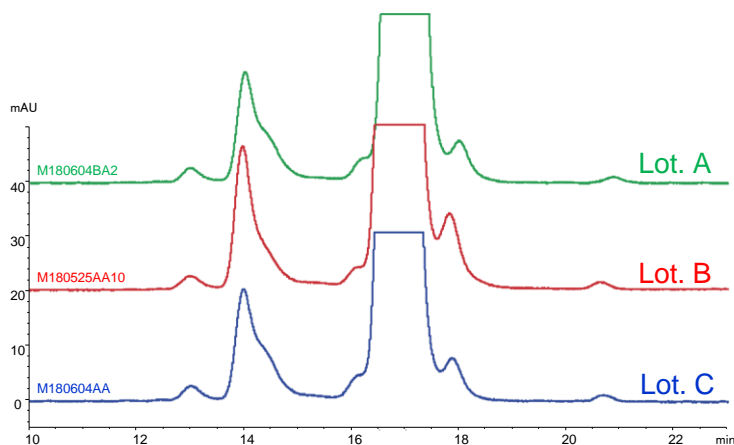
Analysis of antibody-drug conjugate (ADC)



Column	: YMC-SEC MAB (3 μm , 250 \AA) 300 X 4.6 mm I.D.
Eluent	: 0.1 M KH_2PO_4 - K_2HPO_4 (pH 7.0) containing 0.2 M NaCl/2-propanol (85/15)
Flow rate	: 0.165 mL/min
Temperature	: 25°C
Detection	: UV at 280 nm
Injection	: 4 μL
Sample	: ADC mimic (2.5 mg/mL)

Humanized monoclonal antibody and ADC were analyzed using YMC-SEC MAB. Chromatograms show excellent peak shape, and good separation between aggregates and a monomer peak. YMC-SEC MAB is effective for characterization and quality control of antibody drugs.

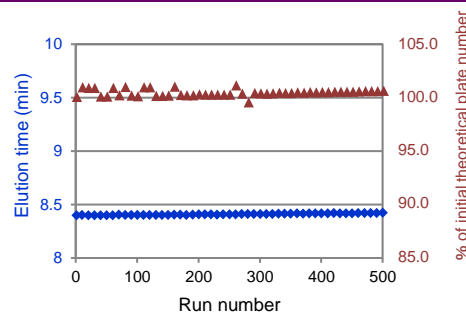
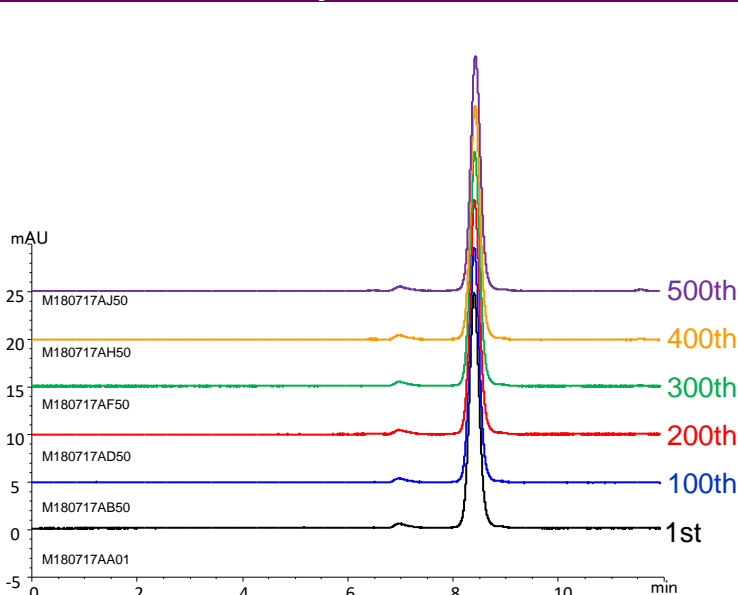
Lot-to-lot reproducibility



Column : YMC-SEC MAB (3 μ m, 250 \AA)
 300 X 4.6 mm.I.D.
 Eluent : 0.1 M KH_2PO_4 - K_2HPO_4 (pH 7.0)
 containing 0.2 M NaCl
 Flow rate : 0.165 mL/min
 Temperature : 25°C
 Detection : UV at 280 nm
 Injection : 10 μ L
 Sample : Humanized monoclonal antibody (5 mg/mL)

A three-lot comparison is shown on the left. YMC-SEC MAB achieves excellent reproducibility of separation of monomer and aggregates as well as monomer and fragments and is effective for quality control.

Excellent durability



Column : YMC-SEC MAB (3 μ m, 250 \AA)
 300 X 4.6 mm.I.D.
 Eluent : 0.1 M NaH_2PO_4 - Na_2HPO_4 (pH 7.0)
 containing 0.2 M NaCl
 Flow rate : 0.33 mL/min
 Temperature : 25°C
 Detection : UV at 280 nm
 Injection : 2 μ L
 Sample : Humanized monoclonal antibody (1 mg/mL)

YMC-SEC MAB can perform stable analysis and have excellent durability without any change of theoretical plate number and elution time even after more than 500 injections on monoclonal antibody analysis.

【Ordering information】

Particle size (μ m)	Column size inner diameter X length (mm)	Product number
3	4.6 X 300	DLM25S03-3046WT
	8.0 X 300	DLM25S03-3008WT

Please contact us about the product with other sizes.

Worldwide Availability

YMC America, Inc.
www.ymcamerica.com

YMC Europe GmbH
www.ymc.de

YMC Switzerland LLC
www.ymc-schweiz.ch

YMC Shanghai Rep. Office
www.ymchina.com

YMC India Pvt. Ltd.
www.ymcindia.com

YMC Korea Co., Ltd.
www.ymckorea.com

YMC Taiwan Co., Ltd.
www.ymctaiwan.com

YMC Singapore Tradelinks Pte. Ltd.
www.ymc.sg

YMC

YMC CO., LTD.

YMC Karasuma-Gojo Bldg., 284 Daigo-cho
Karasuma Nishiiru Gojo-dori, Shimogyo-ku
Kyoto, 600-8106, Japan
TEL:+81-75-342-4515 FAX:+81-75-342-4550
www.ymc.co.jp sales@ymc.co.jp

Distributor