

# ECO<sup>PLUS</sup> Glass Columns | Overview



ECO<sup>PLUS</sup> columns are the first choice for high pressure LC applications.

Your advantages are:

- Increased throughput
- Easy assembly with Quick-Lock system
- High reproducibility due to calibrated glass body

Specifications	
Area of application	medium to high pressure LC
Inner diameters	5, 10, 15, 25, 35, 50 mm
Bed lengths	125, 250, 500 mm
Versions	AB (Aqueous Buffer) SR (Solvent Resistant)
Temperature range	4–40°C
Packing adapter	available
Optional heating/cooling jacket	not available

Pressure resistance						
ID [mm]	5	10	15	25	35	50
Pressure limit [bar]	AB: 80 SR: 80	AB: 80 SR: 50	AB: 70 SR: 50	AB: 50 SR: 50	AB: 40 SR: 40	AB: 30 SR: 15



### Quick-lock system

- ✓ Quick assembly
- ✓ Reliable closing mechanism
- ✓ Easy piston adjustment



### Sealing principle: permanent sealing

- ✓ Reliable sealing even at high pressures
- ✓ High quality materials for optimum chemical resistance
- ✓ Quick and easy maintenance



### Column body: Calibrated precision glass

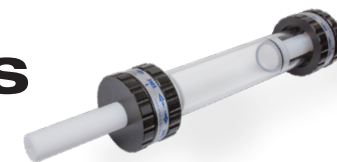
- ✓ Highest reproducibility in packing
- ✓ Excellent column performance
- ✓ 5 mm ID columns: perfect for method development



### Fully porous frits

- ✓ Optimum flow distribution
- ✓ Securely fixed in the piston
- ✓ Different materials and porosities available

# ECO<sup>PLUS</sup> Glass Columns | Specifications



**YMC**

Inner diameter column (mm)	Short pistons		Short/Long Pistons		Long pistons	
	Bed length range (mm)	Volume range (mL)	Bed length range (mm)	Volume range (mL)	Bed length range (mm)	Volume range (mL)
5	30-125	0.6-2.4	0-125	0-2.4	0-125	0-2.4
	150-250	3.0-4.9	70-250	1.4-4.9	0-250	0-4.9
	400-500	7.9-9.8	320-500	6.3-9.8	240-500	4.8-9.8
10	40-125	3.2-9.8	0-125	0-9.8	0-125	0-9.8
	160-250	13-19	80-250	6.2-19	0-250	0-19
	410-500	33-39	330-500	26-39	250-500	20-39
15	30-125	6-22	0-125	0-22	0-125	0-22
	155-250	28-44	75-250	14-44	0-250	0-44
	405-500	72-88	325-500	58-88	245-500	44-88
25	30-125	15-60	0-125	0-60	0-125	0-60
	160-250	80-120	80-250	40-120	0-250	0-120
	410-500	205-245	330-500	165-245	250-500	125-245
35	35-125	35-120	0-125	0-120	0-125	0-120
	160-250	155-240	80-250	80-240	0-250	0-240
	410-500	395-480	330-500	320-480	250-500	245-480
50	40-125	80-245	0-125	0-245	0-125	0-245
	170-250	335-490	90-250	180-490	0-250	0-490
	415-500	815-980	340-500	670-980	255-500	500-980

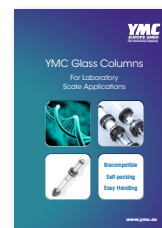
Solvent	AB-Version	SR-Version	
	5-50 mm ID	5-35 mm ID	50 mm ID
Acetone	Resistant	Resistant	Resistant
Acetonitrile	Limited resistant	Resistant	Resistant
Ammonium dihydrogen phosphate	Resistant	Limited resistant	Limited resistant
Cyclohexane	Not resistant	Resistant	Resistant
Dichloromethane	Not resistant	Resistant	Resistant
EDTA (3%)	Resistant	Resistant	Resistant
Acetic acid (6%)	Resistant	Limited resistant	Limited resistant
Ethanol	Resistant	Resistant	Resistant
Ethyl acetate	Limited resistant	Resistant	Resistant
n-Hexane	Not resistant	Resistant	Resistant
Isopropanol	Resistant	Resistant	Resistant
Methanol	Resistant	Resistant	Resistant
NaOH (2M)	Resistant	Limited resistant	Limited resistant
HCl (1M)	Resistant	Limited resistant	Limited resistant
Urea (8M)	Resistant	Resistant	Resistant
NaCl (1M)	Resistant	Limited resistant	Limited resistant
Na <sub>2</sub> SO <sub>4</sub> (0.5M)	Resistant	Limited resistant	Limited resistant

Not resistant

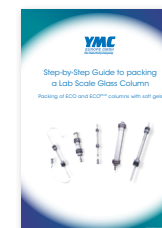
Limited resistant

Resistant

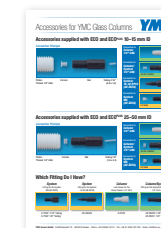
Contact us for more detailed information regarding:



Brochures



Column packing



Connection to your system